



SPORTSWEAR



HEALTHCARE



BEAUTYWEAR



CHEFSWEAR





**10
Healthcare**

Vast experience of meeting the uniform demands of healthcare professionals.

**32
Simki**

Fashion led brand, bringing uncompromising style and comfort to the healthcare professional.

**36
Beauty & Wellness**

The La Beeby™ brand is a recognised industry leader in trend setting styles & quality fabrics.

**64
Chefswear**

Taking our offer to the kitchen, with crisp and straightforward garments to bring the back of house to life.

**70
Sports & Leisurewear
Range**

Extensive stock offering of colour coordinated styles of unbranded, performance sports & leisurewear.

**100
Size Guides**

Easy to follow size charts for our various garment types.

Healthcare Collection

A leading UK supplier for the healthcare industry with over 40 years' experience working with the NHS and other leading healthcare institutions. Our collections offer a wide range of products.

12-15	LADIES TUNIC
16-17	GARMENTS WITH EPPS LOOPS - DENTAL MEN'S TUNIC/ LADIES DRESS/ MEN'S TUNIC/ LADIES TUNIC/ EPAULETTES
18-19	LADIES DRESS
20-21	LADIES TROUSER / LADIES BOOTLEG TROUSER / MEN'S TROUSER
22-23	MATERNITY TUNIC & TROUSER
24-26	MEN'S TUNIC
27	PIQUE POLO
28-30	SCRUB TOP & TROUSER
31	TABARD



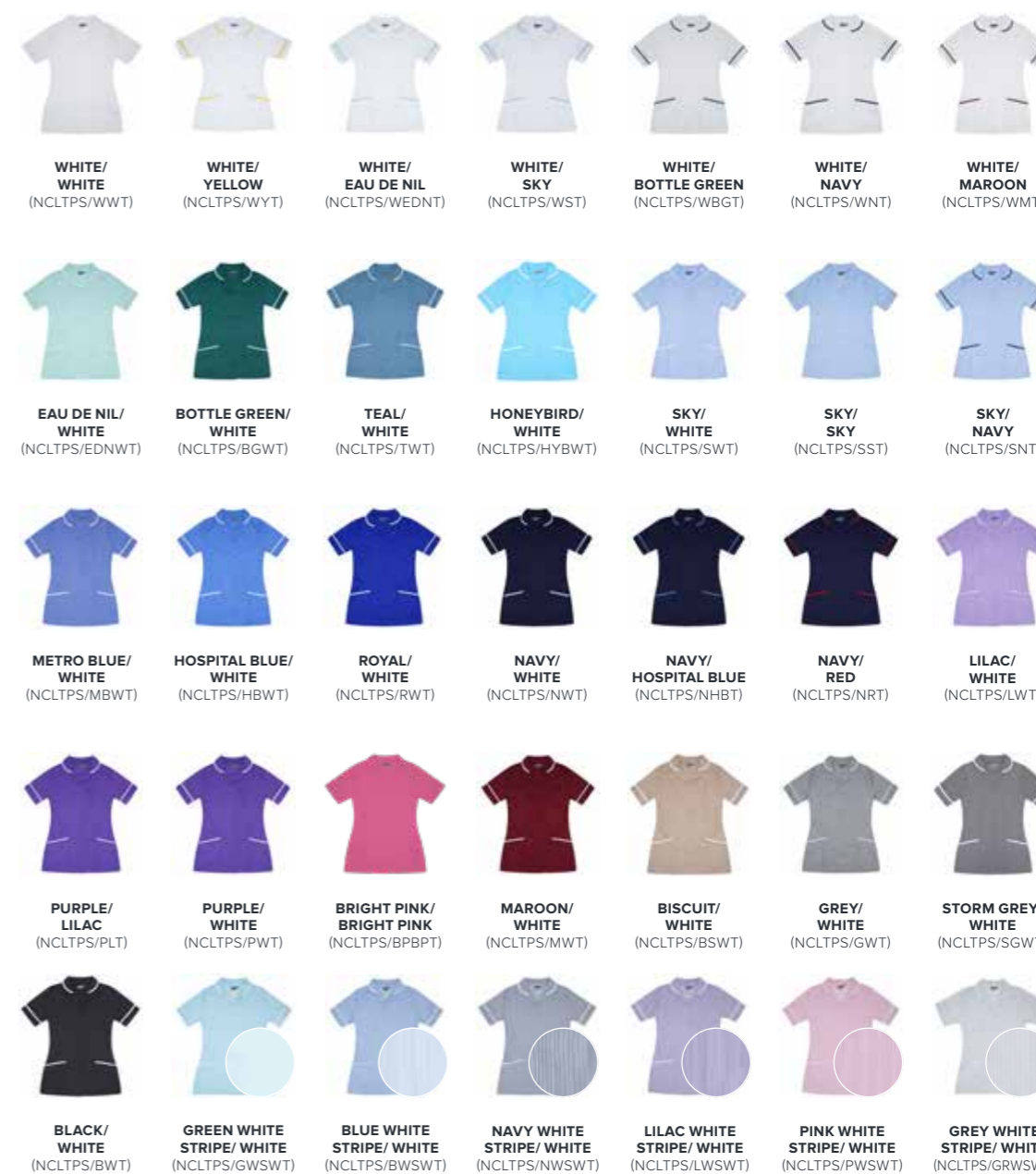
Ladies Tunic

LADIES SIZES: 6-30
 PRODUCT CODE: NCLTPS

- 195 gsm
- Princess seam detail
- Round collar
- Two breast pockets with waterproof lining in left pocket
- Two lower hip pockets with key loop in the right pocket
- Concealed open ended zip, with press stud
- Action back and vents for ease of movement
- Trim to collar, sleeves and lower pockets

MATERIAL: 65% Polyester, 35% Cotton

WASHING INSTRUCTIONS: 65° wash





Ladies Tunic with Revere Collar

LADIES SIZES: 6-30
PRODUCT CODE: NCLTPSR

- 195 gsm
- Princess seam detail
- Revere collar
- Two breast pockets with waterproof lining in left pocket
- Two lower hip pockets with key loop in the right pocket
- Concealed open ended zip, with press stud
- Action back and vents for ease of movement
- Trim to collar, sleeves and lower pockets

MATERIAL: 65% Polyester, 35% Cotton

WASHING INSTRUCTIONS: 65° wash



Ladies Asymmetric Tunic

LADIES SIZES: 6-30
PRODUCT CODE: NALT

- 195 gsm
- Princess seam detail
- Asymmetrical neckline detail
- One left breast pocket with waterproof lining
- Two lower hip pockets
- Concealed open ended zip, with press stud
- Action back for ease of movement
- Trim to neckline, sleeves and pockets

MATERIAL: 65% Polyester, 35% Cotton

WASHING INSTRUCTIONS: 65° wash



Men's Dental Tunic with Epaulette Loops

MENS SIZES: 32"-54"
PRODUCT CODE: NDMTE

- 195 gsm
- Stand collar
- With epaulette loops
- Asymmetrical front with press stud fastening
- One left breast pocket with waterproof lining
- One lower left hip pocket
- Mock back belt
- Action back and vents for ease of movement

MATERIAL: 65% Polyester, 35% Cotton

WASHING INSTRUCTIONS: 65° wash

● **WHITE** (NDMTE/W)



Epaulettes

ONE SIZE
PRODUCT CODE: NE

- 195 gsm
- Epaulettes with press studs
- Sold in pairs
- Easy way to identify distinct roles within your workplace

MATERIAL: 65% Polyester, 35% Cotton

WASHING INSTRUCTIONS: 65° wash

- | | |
|--------------------------------|---------------------------------------|
| ● WHITE (NE/W) | ● LILAC (NE/L) |
| ● YELLOW (NE/Y) | ● PURPLE (NE/P) |
| ● GREY (NE/GR) | ● MAROON (NE/M) |
| ● EAU DE NIL (NE/EDN) | ● RED (NE/RD) |
| ● BOTTLE GREEN (NE/BG) | ● BLACK (NE/B) |
| ● TEAL (NE/T) | ● GREY/ WHITE STRIPE (NE/GRWS) |
| ● SKY (NE/S) | ● GREEN/ WHITE STRIPE (NE/GWS) |
| ● METRO BLUE (NE/MB) | ● PINK/ WHITE STRIPE (NE/PWS) |
| ● HOSPITAL BLUE (NE/HB) | ● LILAC/ WHITE STRIPE (NE/LWS) |
| ● ROYAL BLUE (NE/R) | ● BLUE/ WHITE STRIPE (NE/BWS) |
| ● NAVY (NE/N) | ● NAVY/ WHITE STRIPE (NE/NWS) |



Ladies Dress with Epaulette Loops

LADIES SIZES: 6-30
PRODUCT CODE: NCLDE

- 195 gsm • Princess seam detail • Round collar
- With epaulette loops • Two breast pockets, with a waterproof lining in the left pocket
- Two lower pockets, with a key loop in the right pocket • Concealed zip fastening, with press stud
- Action back, front and back kick pleats for ease of movement • Self coloured trim to collar, sleeves and lower pockets

LENGTHS: Short (100cm), Regular (106cm), Tall (112cm)

MATERIAL: 65% Polyester, 35% Cotton

WASHING INSTRUCTIONS: 65° wash

● **WHITE** (NCLDE/W)



Men's Classic Tunic with Epaulette Loops

MENS SIZES: 32"-54"
PRODUCT CODE: NCMTE

- 195 gsm • Revere collar • With epaulette loops
- One left breast pocket with waterproof lining
- Two lower hip pockets with waterproof lining in the left pocket and key loop in the right pocket
- Concealed zip fastening, with press stud
- Action back and vents for ease of movement

MATERIAL: 65% Polyester, 35% Cotton

WASHING INSTRUCTIONS: 65° wash

● **WHITE** (NCMTE/W)



Ladies Tunic with Epaulette Loops

LADIES SIZES: 6-30
PRODUCT CODE: NCLTPSE

- 195 gsm • Princess seam detail • Round collar • With epaulette loops
- Two breast pockets, with a waterproof lining in the left pocket • Two lower pockets, with a key loop in the right pocket
- Concealed open ended zip fastening, with press stud • Action back and vents for ease of movement
- Self coloured trim to collar, sleeves and lower pockets

MATERIAL: 65% Polyester, 35% Cotton

WASHING INSTRUCTIONS: 65° wash

● **WHITE** (NCLTPSE/W)



Ladies Dress

LADIES SIZES: 6-30
PRODUCT CODE: NCLD

- 195 gsm
- Princess seam detail
- Round collar
- Two breast pockets with waterproof lining in left pocket
- Two lower hip pockets with key loop in the right pocket
- Concealed zip, with press stud
- Action back and front and back kick pleats for ease of movement
- Trim to collar, sleeves and lower pockets

LENGTHS: Short (100cm), Regular (106cm), Tall (112cm)

MATERIAL: 65% Polyester, 35% Cotton

WASHING INSTRUCTIONS: 65° wash



WHITE/ YELLOW
(NCLD/WYT)



WHITE/ EAU DE NIL
(NCLD/WEDNT)



WHITE/ SKY
(NCLD/WST)



EAU DE NIL/ WHITE
(NCLD/EDNWT)



TEAL/ WHITE
(NCLD/TWT)



SKY/ WHITE
(NCLD/SWT)



SKY/ SKY
(NCLD/SST)



METRO BLUE/ WHITE
(NCLD/MBWT)



HOSPITAL BLUE/ WHITE
(NCLD/HBWT)



ROYAL/ WHITE
(NCLD/RWT)



NAVY/ WHITE
(NCLD/NWT)



NAVY/ HOSPITAL BLUE
(NCLD/NHBT)



NAVY/ RED
(NCLD/NRT)



LILAC/ WHITE
(NCLD/LWT)



PURPLE/ WHITE
(NCLD/PWT)



BISCUIT/ WHITE
(NCLD/BSWT)



GREY/ WHITE
(NCLD/GWT)



GREEN WHITE STRIPE/ WHITE
(NCLD/GWSWT)



BLUE WHITE STRIPE/ WHITE
(NCLD/BWSWT)



NAVY WHITE STRIPE/ WHITE
(NCLD/NWSWT)



LILAC WHITE STRIPE/ WHITE
(NCLD/LWSWT)



PINK WHITE STRIPE/ WHITE
(NCLD/PWSWT)



GREY WHITE STRIPE/ WHITE
(NCLD/GRWSWT)



Ladies Trouser

LADIES SIZES: 6-30
PRODUCT CODE: NLSPCT

- 195 gsm
- Side elastication for comfort
- Belt loops
- Two side swing pockets
- Zip front fastening with button closure
- Available in five lengths

LENGTHS: Short - 27", Regular - 29", Tall - 31", X Tall - 33", Unhemmed - 35"

MATERIAL: 65% Polyester, 35% Cotton

WASHING INSTRUCTIONS: 65° wash

- **NAVY** (NLSPCT/N)
- **BOTTLE GREEN** (NLSPCT/BG)
- **BLACK** (NLSPCT/B)
- **MAROON** (NLSPCT/M)
- **BROWN** (NLSPCT/BR) - REGULAR AND UNHEMMED LENGTHS ONLY
- **STORM GREY** (NLSPCT/SG) - REGULAR AND UNHEMMED LENGTHS ONLY

Ladies Bootleg Trouser

LADIES SIZES: 6-30
PRODUCT CODE: NLPCTB

- 195 gsm
- Side elastication for comfort
- Belt loops
- Two side pockets
- Zip front fastening with button closure

LENGTH: Unhemmed - 35"

MATERIAL: 65% Polyester, 35% Cotton

WASHING INSTRUCTIONS: 65° wash

- **BLACK** (NLPCTB/B)
- **NAVY** (NLPCTB/N)



Men's Trouser

MENS SIZES: 28"-54"
PRODUCT CODE: NMPCTP

- 195 gsm
- Sewn in front pleats
- Belt loops
- Two front side pockets and one back pocket
- Zip front fastening with hook and bar closure
- Available in four lengths

LENGTHS: Short - 29", Regular - 31", Tall - 33", Unhemmed - 35"

MATERIAL: 65% Polyester, 35% Cotton

WASHING INSTRUCTIONS: 65° wash



- **NAVY** (NMPCTP/N)
- **BOTTLE GREEN** (NMPCTP/BG)
- **BLACK** (NMPCTP/B)
- **BROWN** (NMPCTP/BR) - REGULAR AND UNHEMMED LENGTHS ONLY
- **STORM GREY** (NMPCTP/SG) - REGULAR AND UNHEMMED LENGTHS ONLY



Ladies Maternity Tunic

LADIES SIZES: 6-30
PRODUCT CODE: NCLTPSM

- 195 gsm
- Princess seam detail
- Round collar
- Two breast pockets and two lower pockets
- Concealed zip fastening, with press stud
- Action back and vents for ease of movement
- Trim to collar, sleeves and lower pockets

MATERIAL: 65% Polyester, 35% Cotton

WASHING INSTRUCTIONS: 65° wash



Ladies Maternity Tunic with Epaulette Loops

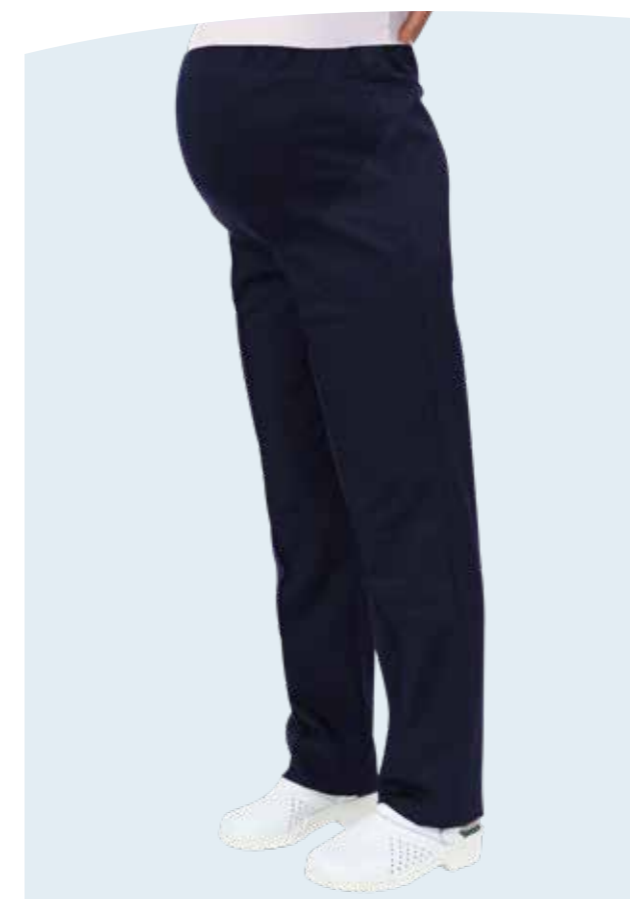
LADIES SIZES: 6-30
PRODUCT CODE: NCLTPSME

- 195 gsm
- Princess seam detail
- Round collar
- With epaulette loops. See the full range of epaulettes on pages 14-15
- Two breast pockets and two lower pockets
- Concealed zip fastening, with press stud
- Action back and vents for ease of movement
- Self coloured trim to collar, sleeves and lower pockets

MATERIAL: 65% Polyester, 35% Cotton

WASHING INSTRUCTIONS: 65° wash

○ **WHITE** (NCLTPSME/W)



Ladies Maternity Trouser

LADIES SIZES: 6-30
PRODUCT CODE: NLMT

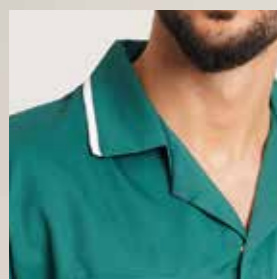
- 195 gsm
- Soft jersey front panel
- Elasticated waistband with adjustable button mechanism for flexibility

LENGTHS: Unhemmed - 35"

MATERIAL: 65% Polyester, 35% Cotton

WASHING INSTRUCTIONS: 65° wash

- **NAVY** (NLMT/N)
- **BLACK** (NLMT/B)
- **BROWN** (NLMT/BR)



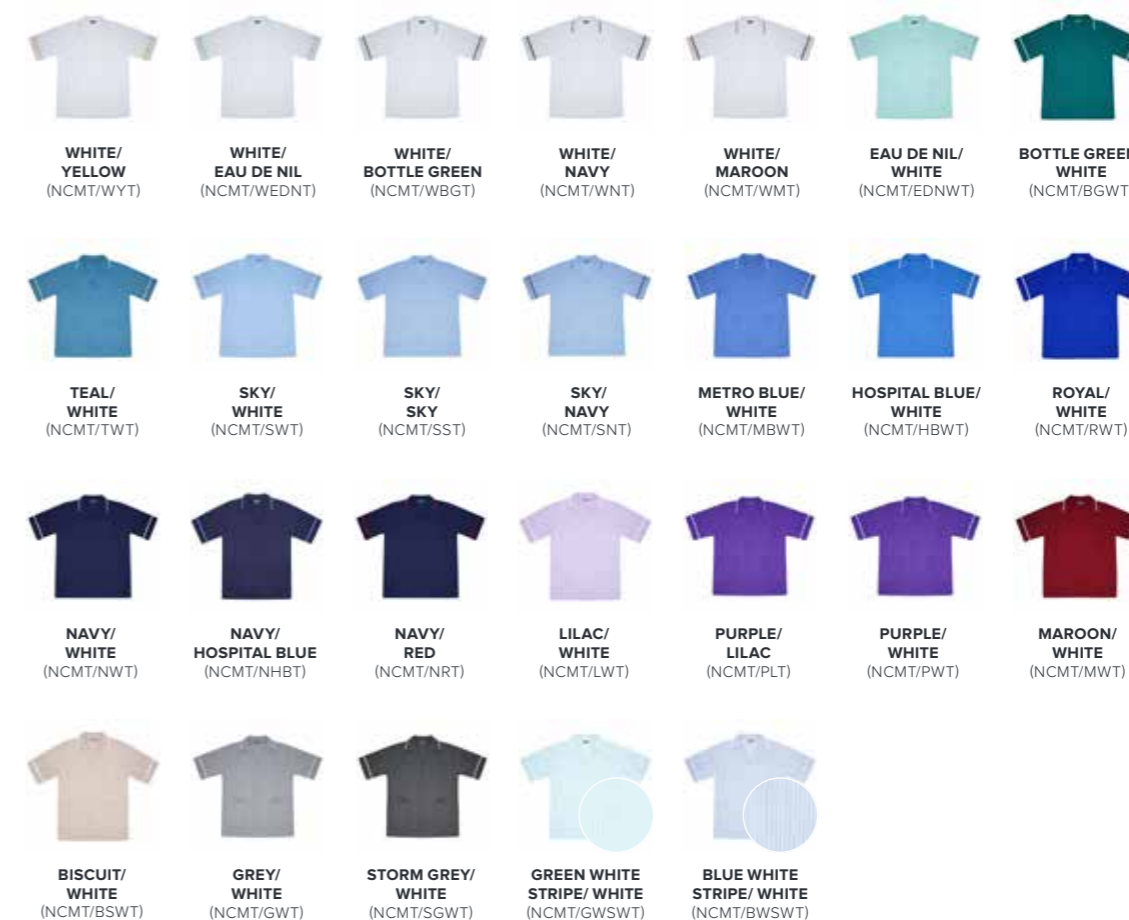
Men's Classic Tunic

MENS SIZES: 32"-54"
PRODUCT CODE: NCMT

- 195 gsm
- Revere collar
- Two breast pockets with waterproof lining in left pocket
- Two lower hip pockets with waterproof lining in the left pocket and key loop in the right pocket
- Concealed open ended zip, with press stud
- Action back and vents for ease of movement
- Trim to collar and sleeves

MATERIAL: 65% Polyester, 35% Cotton

WASHING INSTRUCTIONS: 65° wash



Men's Dental Tunic

MENS SIZES: 32"-54"
PRODUCT CODE: NDMT

- 195 gsm
- Stand collar
- Asymmetrical front with press stud fastening
- One left breast pocket with waterproof lining
- One lower left hip pocket
- Mock back belt
- Action back and vents for ease of movement

MATERIAL: 65% Polyester, 35% Cotton

WASHING INSTRUCTIONS: 65° wash

- GREY (NDMT/G)
- BOTTLE GREEN (NDMT/BG)
- SKY (NDMT/S)
- MAROON (NDMT/M)
- METRO BLUE (NDMT/MB)
- BLACK (NDMT/B)
- HOSPITAL BLUE (NDMT/HB)
- ROYAL (NDMT/R)
- NAVY (NDMT/N)



Men's Pique Polo

ADULT SIZES: XS-3XL
PRODUCT CODE: BEH-3522M

- 220 gsm
- Contemporary tailored fit
- Flat knit collar
- Knitted raised cuffs
- Behrens Active tear out label
- 3 Self coloured button placket
- Ladies fit available **BEH-4469L**

MATERIAL: 65% Polyester, 35% Cotton

WASHING INSTRUCTIONS: 60°

- BLACK
- BURGUNDY
- WHITE
- DARK GREEN
- NAVY
- ROYAL BLUE
- DARK NAVY
- SKY
- RED
- GREY MARL
- PURPLE



Men's Mandarin Tunic

MENS SIZES: 32"-54"
PRODUCT CODE: NMT

- 195 gsm
- Mandarin collar
- With epaulette loops. See the full range of epaulettes on pages 14-15
- Zip fastening with press stud
- One left sleeve pocket, with waterproof lining and pen division
- Two lower hip pockets with internal key loop and additional bleeper pocket in right pocket
- Action back and vents for ease of movement

MATERIAL: 65% Polyester, 35% Cotton

WASHING INSTRUCTIONS: 65° wash

- WHITE (NMT/W)
- SKY (NMT/S)
- HOSPITAL BLUE (NMT/HB)
- ROYAL (NMT/R)
- NAVY (NMT/N)



Ladies Pique Polo

ADULT SIZES: 6-18
PRODUCT CODE: BEH-4469L

- 220 gsm
- Contemporary tailored fit
- Flat knit collar
- Knitted raised cuffs
- Behrens Active tear out label
- 3 Self coloured button placket
- Men's fit available **BEH-3522M**

MATERIAL: 65% Polyester, 35% Cotton

WASHING INSTRUCTIONS: 60°

- BLACK
- NAVY
- CERISE
- RED
- WHITE

Contrast Trim Smart Scrub Top

UNISEX SIZES: XS-3XL
PRODUCT CODE: NSTT

- 195 gsm
- Crossover neckline for modesty
- One left breast pocket and two lower hip pockets, all with waterproof lining
- Action back and side vents for ease of movement
- Trim to neckline and sleeves

MATERIAL: 65% Polyester, 35% Cotton

WASHING INSTRUCTIONS: 65° wash



Plain Smart Scrub Top

UNISEX SIZES: XS-3XL
PRODUCT CODE: NSTP

- 195 gsm
- Crossover neckline for modesty
- One left breast pocket and two lower hip pockets, all with waterproof lining
- Action back and side vents for ease of movement
- Self coloured trim to neckline and sleeves

MATERIAL: 65% Polyester, 35% Cotton

WASHING INSTRUCTIONS: 65° wash

- WHITE (NSTP/W)
- EAU DE NIL (NSTP/EDN)
- BOTTLE GREEN (NSTP/BG)
- TEAL (NSTP/T)
- SKY (NSTP/S)
- METRO BLUE (NSTP/MB)
- HOSPITAL BLUE (NSTP/HB)
- ROYAL (NSTP/R)
- RED (NSTP/RD)
- NAVY (NSTP/N)
- LILAC (NSTP/L)
- MAROON (NSTP/M)
- GREY (NSTP/G)
- STORM GREY (NSTP/SG)
- BLACK (NSTP/B)



Smart Scrub Trouser

UNISEX SIZES: XS-3XL
PRODUCT CODE: NSTR

- 195 gsm
- Fully elasticated waist with drawstring
- Two side pockets
- Available in three lengths

LENGTHS: Short - 29", Regular - 31", Tall - 33"

MATERIAL: 65% Polyester, 35% Cotton

WASHING INSTRUCTIONS: 65° wash



- EAU DE NIL (NSTR/EDN)
- BOTTLE GREEN (NSTR/BG)
- TEAL (NSTR/T)
- SKY (NSTR/S)
- METRO BLUE (NSTR/MB)
- HOSPITAL BLUE (NSTR/HB)
- ROYAL (NSTR/R)
- NAVY (NSTR/N)
- PURPLE (NSTR/P)
- MAROON (NSTR/M)
- GREY (NSTR/G)
- STORM GREY (NSTR/SG)
- BLACK (NSTR/B)



Reversible Scrub Top

UNISEX SIZES: XS-3XL
 PRODUCT CODE: NST

- 145 gsm
- Reversible scrub top
- Coloured back neckline for size identification
- One hip pocket (inside and out)

MATERIAL: 65% Polyester, 35% Cotton

WASHING INSTRUCTIONS: 65° wash



CEIL BLUE
(NST/CB)

NAVY
(NST/N)

JADE GREEN
(NST/JG)



Reversible Scrub Trouser

UNISEX SIZES: XS-3XL
 PRODUCT CODE: NSB

- 145 gsm
- Adjustable drawstring tie waist
- Colour coded drawstring for size identification
- One rear patch pocket

MATERIAL: 65% Polyester, 35% Cotton

WASHING INSTRUCTIONS: 65° wash



CEIL BLUE
(NSB/CB)

NAVY
(NSB/N)

JADE GREEN
(NSB/JG)



BLACK
(NT/B)

BOTTLE GREEN
(NT/BG)

NAVY
(NT/N)

ROYAL
(NT/R)

WHITE
(NT/W)

Tabard

UNISEX SIZES: XS-3XL
 PRODUCT CODE: NT

- 195 gsm
- Adjustable side tabs with press stud fastening
- Large front patch pocket with two compartments

MATERIAL: 65% Polyester, 35% Cotton

WASHING INSTRUCTIONS: 65° wash

simki.

Setting a new standard in the health & wellness industry by providing comfortable and functional medical apparel, made using advanced fabrics, perfect for the modern healthcare professional.

Our innovative fabrics & design results in a unique uniform that transcends sectors whilst offering the performance, style & comfort traditionally associated with athletic garments.

-
- 34 NOVA SCRUB TOP
& NEO SCRUB JOGGER
 - 35 ARI SCRUB TOP
& ARLO SCRUB TROUSER
 - 36 MILES SCRUB TOP
& MAXWELL SCRUB JOGGER
 - 37 OSCAR SCRUB TOP
& OTTO SCRUB TROUSER



Nova Scrub Top

UNISEX SIZES: XS-3XL
 PRODUCT CODE: BEH-4957

- V- neckline
- Functional front patch pocket
- Side seam hem vents for ease of movement

MATERIAL: 81% Poly, 15% Viscose, 4% Spandex

WASHING INSTRUCTIONS: 60° wash

- BLACK
- NAVY
- CHARCOAL
- TEAL
- CEIL BLUE
- WHITE



Neo Scrub Jogger

UNISEX SIZES: XS-3XL
 PRODUCT CODE: BEH-4958

- Slim non-restrictive fit
- 3 functional pockets
- Comfortable stretch ankle cuffs
- Stretch waistband with adjustable inner drawcord

MATERIAL: 81% Poly, 15% Viscose, 4% Spandex

WASHING INSTRUCTIONS: 60° wash

- BLACK
- NAVY
- CHARCOAL
- TEAL
- CEIL BLUE
- WHITE

Ari Scrub Top

UNISEX SIZES: XS-3XL
 PRODUCT CODE: BEH-4955

- V- neckline
- 2 Functional welt pockets
- Side seam hem vents for ease of movement

MATERIAL: 81% Poly, 15% Viscose, 4% Spandex

WASHING INSTRUCTIONS: 60° wash

- BLACK
- NAVY
- CHARCOAL
- TEAL
- CEIL BLUE



Arlo Scrub Trousers

UNISEX SIZES: XS-3XL
 PRODUCT CODE: BEH-4956

- Straight leg trouser
- 3 functional pockets
- Stretch waistband with drawcord

MATERIAL: 81% Poly, 15% Viscose, 4% Spandex

WASHING INSTRUCTIONS: 60° wash

- BLACK
- NAVY
- CHARCOAL
- TEAL
- CEIL BLUE
- WHITE

Miles Scrub Top

UNISEX SIZES: XS-2XL
PRODUCT CODE: BEH-4951

- Crew neck
- Functional front patch pocket at chest and welt pockets at side seams

MATERIAL: 81% Poly, 15% Viscose, 4% Spandex

WASHING INSTRUCTIONS: 60° wash

- BLACK
- NAVY
- CHARCOAL
- TEAL
- CEIL BLUE



Maxwell Scrub Jogger

UNISEX SIZES: XS-2XL
PRODUCT CODE: BEH-4953

- 3 functional pockets
- Comfortable stretch ankle cuffs
- Elasticated waistband with drawcord

MATERIAL: 81% Poly, 15% Viscose, 4% Spandex

WASHING INSTRUCTIONS: 60° wash

- BLACK
- NAVY
- CHARCOAL
- TEAL
- CEIL BLUE

Oscar Scrub Top

UNISEX SIZES: XS-2XL
PRODUCT CODE: BEH-4950

- V- neckline
- Functional welt pockets at side seams

MATERIAL: 81% Poly, 15% Viscose, 4% Spandex

WASHING INSTRUCTIONS: 60° wash

- BLACK
- NAVY
- CHARCOAL
- TEAL
- CEIL BLUE



Otto Scrub Trouser

UNISEX SIZES: XS-2XL
PRODUCT CODE: BEH-4952

- Straight leg trouser
- 3 functional pockets
- Stretch waistband with drawcord

MATERIAL: 81% Poly, 15% Viscose, 4% Spandex

WASHING INSTRUCTIONS: 60° wash

- BLACK
- NAVY
- CHARCOAL
- TEAL
- CEIL BLUE



Beauty & Wellness

Banishing bland workwear - bringing stylish catwalk-worthy uniforms to salons, spas and independent therapists. We combine style, quality and comfort so you don't have to compromise when choosing your uniforms.

38-39 CELESTE / NINA
 40-41 ELIZA / MADELEINE
 42-43 GISELE / ELENA
 44-45 SARA / LENA
 46-47 EMMA / DIAMANTE
 48-49 HAYLEY / JULIETTE
 50-51 MANON / MAYA
 52-53 BEAU / COCO
 54-55 EVE / MILA
 56-57 AMIE / CHLOE
 58-59 AUDREY / ETTA
 60-61 MACY / LILI
 62-63 STEPHANE / LEROY
 LADIES PIQUE POLO / FOB WATCH

Celeste

LADIES SIZES: 6-32
 PRODUCT CODE: LBCELESTE

- Fitted tunic
- Flattering V Neckline
- Notch sleeves for movement
- Side vents
- Back zip fastening
- Co-ordinates with Nina, Sara, Lena, Manon & Maya

MATERIAL: 100% Soft Twill Polyester

WASHING INSTRUCTIONS:
 Easy care, wash up to 60°, cool iron if necessary



Nina

LADIES SIZES: 6-32
 PRODUCT CODE: LBNINA

- Fitted tunic
- Flattering V Neckline
- Notch sleeves for movement
- Side vents
- Back zip fastening
- 2 Side Pockets
- Co-ordinates with Celeste, Sara, Lena, Manon & Maya

MATERIAL: 100% Soft Twill Polyester

WASHING INSTRUCTIONS:
 Easy care, wash up to 60°, cool iron if necessary





Eliza

LADIES SIZES: 6-32
PRODUCT CODE: LBELIZA

- Fitted tunic
- Longer length
- Faux crystal detail
- Side vents
- Back zip fastening
- Matches with Madeleine dress

MATERIAL: 100% Soft Twill Polyester

WASHING INSTRUCTIONS:
Easy care, wash up to 60°, cool iron if necessary



Madeleine

LADIES SIZES: 6-32
PRODUCT CODE: LBMADELEINE

- Fitted dress
- Faux crystal detail
- Kick pleat for movement
- Back zip fastening
- Matches with Eliza tunic

MATERIAL: 100% Soft Twill Polyester

WASHING INSTRUCTIONS:
Easy care, wash up to 60°, cool iron if necessary



BLACK (BK)



PLUM (PM)



WHITE (WH)



GREY (GR)



NAVY (NX)





Elena

LADIES SIZES: 6-32
PRODUCT CODE: LBELENA

- Faux wrap detail with side tie
- Pleat detail on sleeve
- Back zip fastening
- Back vent for ease of movement

MATERIAL: 100% Soft Twill Polyester

WASHING INSTRUCTIONS:
Easy care, wash up to 60°, cool iron if necessary



BLACK (BK)



NAVY (NX)



GREY (GR)



PLUM (PM)



Gisele

LADIES SIZES: 6-32
PRODUCT CODE: LBGISELE

- Faux wrap detail with side tie
- Pleat detail on sleeve
- Back zip fastening

MATERIAL: 100% Soft Twill Polyester

WASHING INSTRUCTIONS:
Easy care, wash up to 60°, cool iron if necessary



BLACK (BK)



PLUM (PM)



NAVY (NX)



GREY (GR)



Sara

LADIES SIZES: 6-32
 PRODUCT CODE: LBSARA

- Fitted tunic
- Flattering V Neckline
- Longer length
- Notch sleeves for movement
- Side vents
- Back zip fastening
- Co-ordinates with Celeste, Nina, Lena, Manon & Maya

MATERIAL: 100% Soft Twill Polyester

WASHING INSTRUCTIONS:
 Easy care, wash up to 60°, cool iron if necessary



Lena

LADIES SIZES: 6-32
 PRODUCT CODE: LBLENA

- Fitted tunic
- Flattering V Neckline
- Longer length
- Notch sleeves for movement
- Side vents
- Back zip fastening
- 2 side pockets
- Co-ordinates with Celeste, Nina, Sara, Manon & Maya

MATERIAL: 100% Soft Twill Polyester

WASHING INSTRUCTIONS:
 Easy care, wash up to 60°, cool iron if necessary

Emma

LADIES SIZES: 6-32
PRODUCT CODE: LBEMMA

- Asymmetrical neckline
- Pleat detail
- Side vents
- Back zip fastening

MATERIAL: 100% Soft Twill Polyester

WASHING INSTRUCTIONS:
Easy care, wash up to 60°, cool iron if necessary



Diamante

LADIES SIZES: 6-32
PRODUCT CODE: LBDIAMANTE

- Diamante detail
- Front zip fastening
- Side vents

MATERIAL: 100% Soft Twill Polyester

WASHING INSTRUCTIONS:
Easy care, wash up to 60°, cool iron if necessary



Hayley

LADIES SIZES: 6-32
PRODUCT CODE: LBHAYLEY

- Flattering V neckline
- Front seam detail
- Side vents for ease of movement
- Back zip fastening

MATERIAL: 100% Soft Twill Polyester

WASHING INSTRUCTIONS:
Easy care, wash up to 60°, cool iron if necessary



BLACK (BK)



GREY (GR)



Juliette

LADIES SIZES: 6-32
PRODUCT CODE: LBJULIETTE

- Classic square neck design
- Princess seams
- Back zip fastening

MATERIAL: 100% Soft Twill Polyester

WASHING INSTRUCTIONS:
Easy care, wash up to 60°, cool iron if necessary



BLACK (BK)



NAVY (NX)



GREY (GR)



WHITE (WH)



Manon

LADIES SIZES: 6-32
PRODUCT CODE: LBMANON

- Fitted dress
- Flattering V Neckline
- Notch sleeves for movement
- Kick pleat
- Back zip fastening
- Co-ordinates with Celeste, Nina, Sara, Lena & Maya

MATERIAL: 100% Soft Twill Polyester

WASHING INSTRUCTIONS:
Easy care, wash up to 60°, cool iron if necessary



BLACK (BK)



PLUM (PM)



NAVY (NX)



GREY (GR)



Maya

LADIES SIZES: 6-32
PRODUCT CODE: LBMAYA

- Fitted dress
- Flattering V Neckline
- Notch sleeves for movement
- Kick pleat
- Back zip fastening
- Co-ordinates with Celeste, Nina, Sara, Lena & Manon

MATERIAL: 100% Soft Twill Polyester

WASHING INSTRUCTIONS:
Easy care, wash up to 60°, cool iron if necessary



BLACK (BK)



PLUM (PM)



NAVY (NX)



GREY (GR)



BLACK (BK)



PLUM (PM)



NAVY (NX)



GREY (GR)



Beau

LADIES SIZES: 6-32
PRODUCT CODE: LBBEAU

- Asymmetrical neckline
- Crystal detail
- Concealed front zip fastening
- Side vents

MATERIAL: 100% Soft Twill Polyester

WASHING INSTRUCTIONS:
Easy care, wash up to 60°, cool iron if necessary



Coco

LADIES SIZES: 6-32
PRODUCT CODE: LBCOCO

- Angled neckline
- Peplum waist detail
- Back zip fastening

MATERIAL: 100% Soft Twill Polyester

WASHING INSTRUCTIONS:
Easy care, wash up to 60°, cool iron if necessary



BLACK (BK)



PLUM (PM)



NAVY (NX)



GREY (GR)



Eve

LADIES SIZES: 6-32
 PRODUCT CODE: LBEVE

- V Neckline
- Contrasting trim
- Front zip fastening

MATERIAL: 100% Polyester

WASHING INSTRUCTIONS:
 Easy care, wash up to 60°, cool iron if necessary



Mila

LADIES SIZES: 6-32
 PRODUCT CODE: LBMILA

- Adjustable wrap over design
- Security button at neck to keep you feeling secure
- Notched sleeves and side vents for ease of movement

MATERIAL: 100% Soft Twill Polyester

WASHING INSTRUCTIONS:
 Easy care, wash up to 60°, cool iron if necessary



Amie

LADIES SIZES: 6-32
PRODUCT CODE: LBAMIE

- Sleeveless wrap tunic
- Perfect for layering, as worn in image over a long sleeve black t-shirt
- Side tie fastening
- Side vents for movement

MATERIAL: 100% Soft Twill Polyester

WASHING INSTRUCTIONS:
Easy care, wash up to 60°, cool iron if necessary

● BLACK (BK)



Chloe

LADIES SIZES: S-XL
PRODUCT CODE: LBCHLOE

- Maternity tunic
- Square neckline
- Faux button fastening
- Back tie to allow the wearer to adjust the tunic sizing

MATERIAL: 100% Soft Twill Polyester

WASHING INSTRUCTIONS:
Easy care, wash up to 60°, cool iron if necessary



BLACK (BK)

WHITE (WH)

Audrey

LADIES SIZES: 6-24
PRODUCT CODE: LBAUDREY

- Fitted jumpsuit
- V Neckline
- Cross seam detail
- Waistband detail
- Unfinished 34" leg

MATERIAL: 100% Soft Twill Polyester

WASHING INSTRUCTIONS:
Easy care, wash up to 60°, cool iron if necessary



BLACK (BK)



BLACK (BK)



NAVY (NX)



GREY (GR)



PLUM (PM)



WHITE (WH)

Etta

LADIES SIZES: 6-32
PRODUCT CODE: LBETTA

- Slim leg crop trouser
- High waist
- Notch ankle detail
- Front zip fastening

MATERIAL: 100% Soft Twill Polyester

WASHING INSTRUCTIONS:
Easy care, wash up to 60°, cool iron if necessary



Macy

LADIES SIZES: 6-32
PRODUCT CODE: LBMACY

- Slim leg trouser
- High waist
- Front zip fastening

LENGTHS:
 Size 6-24 – Available in 28" Hemmed, 30" Hemmed, 33" Unhemmed
 Sizes 26-32 – Available in 33" Unhemmed only

MATERIAL: 100% Soft Twill Polyester

WASHING INSTRUCTIONS:
Easy care, wash up to 60°, cool iron if necessary



BLACK (BK)



NAVY (NX)



GREY (GR)



PLUM (PM)



Lili

LADIES SIZES: 6-32
PRODUCT CODE: LBLILI

- Straight leg trouser
- High waist
- Side zip fastening

LENGTHS:
 Size 6-24 – Available in 29" Hemmed, 31" Hemmed, 34" Unhemmed
 Sizes 26-32 – Available in 34" Unhemmed only

MATERIAL: 100% Soft Twill Polyester

WASHING INSTRUCTIONS:
Easy care, wash up to 60°, cool iron if necessary



GREY (GR)



PLUM (PM)



BLACK (BK)



WHITE (WH)



NAVY (NX)



Stephane

MENS SIZES: S-XL
PRODUCT CODE: LBSTEP

- Fitted shirt
- Grandad collar
- Front button fastening
- Turn up sleeve detail

MATERIAL: 100% Soft Twill Polyester

WASHING INSTRUCTIONS:
 Easy care, wash up to 60°, cool iron if necessary



BLACK (BK)



WHITE (WH)



NAVY (NX)



GREY (GR)

Leroy

MENS SIZES: S-XL
PRODUCT CODE: LBLEROY

- Straight leg trouser
- Elasticated waistband
- Front button fastening
- Available in 34" leg

MATERIAL: 100% Soft Twill Polyester

WASHING INSTRUCTIONS:
 Easy care, wash up to 60°, cool iron if necessary



BLACK (BK)



WHITE (WH)



NAVY (NX)



GREY (GR)

Ladies Pique Polo

ADULT SIZES: 6-18
PRODUCT CODE: BEH-4469L

- 220 gsm
- Contemporary tailored fit
- Flat knit collar
- Knitted raised cuffs
- Behrens Active tear out label
- 3 Self coloured button placket
- Men's fit available **BEH-3522M**
 – See page 63

MATERIAL: 65% Polyester, 35% Cotton

WASHING INSTRUCTIONS: 60°



BLACK



NAVY



WHITE



CERISE



RED



Fob Watch

PRODUCT CODE: LFSIL (SILICON)
 BTAR1101 (SILVER)

- Silicon or silver fob watch

SILICON FOB WATCH AVAILABLE IN THE BELOW COLOURS:

● BLACK (BK)

○ WHITE (WH)

● NAVY (NV)

● PURPLE (PU)

● CERISE (CE)

● NAVY (NV)

Chefs Wear Collection

Bringing quality to the kitchen. High quality fabrics, designed to last, alongside practical and wearable designs to make the team look great. Bringing a straightforward and value for money option to the table.

- 66 LONG SLEEVE CHEFS JACKET
- 67 SHORT SLEEVE CHEFS JACKET / CHEFS TROUSER
- 68 SKULL CAP
- 69 BIB APRON





Long Sleeve Jacket

UNISEX SIZES: 2XS-4XL
PRODUCT CODE: HHCJLS

- 195 gsm
- Long Sleeve with pen pocket
- Concealed stud fastening
- Underarm vent

MATERIAL: 65% Polyester, 35% Cotton

WASHING INSTRUCTIONS: 65° wash



BLACK



WHITE

Short Sleeve Jacket

UNISEX SIZES: 2XS-4XL
PRODUCT CODE: HHCJSS

- 195 gsm
- Short Sleeve with pen pocket
- Concealed stud fastening
- Underarm vent

MATERIAL: 65% Polyester, 35% Cotton

WASHING INSTRUCTIONS: 65° wash



BLACK



WHITE



Chefs Wear Trouser

UNISEX SIZES: 2XS-4XL
PRODUCT CODE: HHCT

- 195 gsm
- Elasticated drawstring waist

MATERIAL: 65% Polyester, 35% Cotton

WASHING INSTRUCTIONS: 65° wash



BLACK



BLUE/WHITE CHECK



Skull Cap

UNISEX SIZES: ONE SIZE
PRODUCT CODE: HHCS

• 195 gsm

MATERIAL: 65% Polyester, 35% Cotton

WASHING INSTRUCTIONS: 65° wash



BLACK



WHITE



BLUE/ WHITE
CHECK

Bib Apron

UNISEX SIZES: ONE SIZE
PRODUCT CODE: HHBA

• 195 gsm

MATERIAL: 65% Polyester, 35% Cotton

WASHING INSTRUCTIONS: 65° wash

COLOURS: ● BLACK



Sports & Leisurewear Range

Quality blank Sports & Leisurewear apparel in the most sought-after styles. We use the latest designs and technology, providing you with a range of the finest clothing and accessories that maximizes performance.

72-73	GRINDLE TEE
74	GRINDLE POLO
75	UNISEX GRINDLE ¼ ZIP
76-77	PIQUE POLO
78-79	PLAIN HERITAGE TEE / HERITAGE SHORT
80-81	HERITAGE POLO / HERITAGE TEE
82-83	HERITAGE TECH TOP / HERITAGE HOODIE
84-85	PRO TRACK TOP / PRO WINDBREAKER / TEAM HOODIE
86-87	TRAINING TEE / MATCHDAY POLO / WINDBREAKER / TRACK TOP
88-89	LEISURE SHORT / TRAINING SHORT / PRO RUGBY SHORT / RUGBY SHORT
90-91	SKINNY PANT / TECH TOP / LEISURE PANT / TRACK PANT
92-93	STADIUM JACKET / SUB COAT MATCHDAY JACKET
94-95	SHORT SLEEVE CRICKET SHIRT / CRICKET TROUSERS / LONG SLEEVE CRICKET SHIRT / CLUB CRICKET PANT
96-97	CRICKET SLIPOVER / CRICKET JUMPER
98-99	PLAYER BACKPACK / RUCKSACK / PLAYER HOLDALL / WHEELIE TEAM KITBAG / XL TEAM KITBAG

Men's Grindle Tee

MENS SIZES: S, M, L, XL, 2XL, 3XL
PRODUCT CODE: GRIN-T4452M

- 160 gsm
- Technical fit
- Crew neckline
- Behrens Active tear out labels
- **Also available in Ladies fit – product code - GRIN-T4455L**

MATERIAL: 100% Polyester



GREY
(GRIN-T4452M-GRY)



RED
(GRIN-T4452M-RED)



ROYAL
(GRIN-T4452M-RYL)



Ladies Grindle Tee

LADIES SIZES: 8, 10, 12, 14, 16, 18
PRODUCT CODE: GRIN-T4455L

- 160 gsm
- Technical fit
- Crew neckline
- Behrens Active tear out labels
- **Also available in Men's fit – product code - GRIN-T4452M**

MATERIAL: 100% Polyester



GREY
(GRIN-T4455L-GRY)



RED
(GRIN-T4455L-RED)



ROYAL
(GRIN-T4455L-RYL)

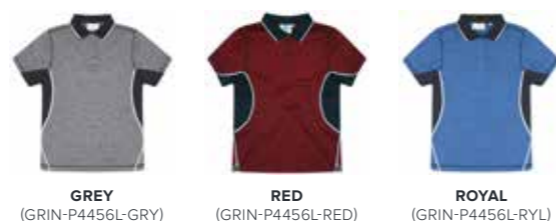


Ladies Grindle Polo

LADIES SIZES: 8, 10, 12, 14, 16, 18
 PRODUCT CODE: GRIN-P4456L

- 160 gsm
- Technical fit
- Behrens Active tear out labels
- Also available in Men's fit – product code - GRIN-P4453M

MATERIAL: 100% Polyester

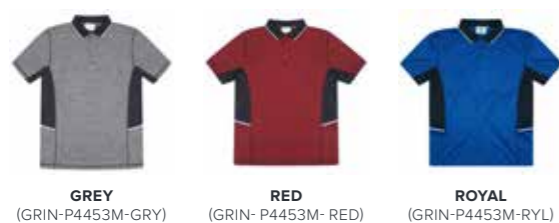


Men's Grindle Polo

MENS SIZES: S, M, L, XL, 2XL, 3XL
 PRODUCT CODE: GRIN-P4453M

- 160 gsm
- Technical fit
- Behrens Active tear out labels
- Also available in Ladies fit – product code - GRIN-P4456L

MATERIAL: 100% Polyester



Unisex Grindle 1/4 Zip

MENS SIZES: S, M, L, XL, 2XL, 3XL
 PRODUCT CODE: GRIN-Z4454M

- 220 gsm
- Technical fit
- 1/4 zip
- Unisex fit
- Behrens Active tear out labels

MATERIAL: 100% Polyester





Ladies Pique Polo

ADULT SIZES: 6-18
 PRODUCT CODE: BEH-4469L

- 220 gsm
- Contemporary tailored fit
- Flat knit collar
- Knitted raised cuffs
- Behrens Active tear out label
- 3 Self coloured button placket
- Men's fit available **BEH-3522M**

MATERIAL: 65% Polyester, 35% Cotton

WASHING INSTRUCTIONS: 60°

Men's Pique Polo

ADULT SIZES: XS-3XL
 PRODUCT CODE: BEH-3522M

- 220 gsm
- Contemporary tailored fit
- Flat knit collar
- Knitted raised cuffs
- Behrens Active tear out label
- 3 Self coloured button placket
- Ladies fit available **BEH-4469L**

MATERIAL: 65% Polyester, 35% Cotton

WASHING INSTRUCTIONS: 60°





Heritage Tee

KIDS SIZES: MB, LB, XLB
ADULT SIZES: XS, S, M, L, XL, 2XL, 3XL
PRODUCT CODE: HER-TEE

- 150 gsm
- Technical breathable eyelet fabric
- Quick dry moisture management technology
- Antimicrobial fibres to prevent odours developing
- Sports crew neck with set in sleeves
- Ideal for embroidery or print

MATERIAL: 100% Polyester



BLACK
(HER-TEE-BLK)

NAVY
(HER-TEE-NVY)

Heritage Short

KIDS SIZES: MB, LB, XLB
ADULT SIZES: S, M, L, XL, 2XL, 3XL
PRODUCT CODE: HER-SHORT

- 150 gsm
- Elasticated waistband
- Technical breathable eyelet fabric
- Quick dry moisture management technology
- Antimicrobial fibres to prevent odours developing

MATERIAL: 100% Polyester



BLACK
(HER-SHORT-BLK)

NAVY
(HER-SHORT-NVY)





Heritage Polo

KIDS SIZES: XSB, SB, MB, LB, XLB
ADULT SIZES: S, M, L, XL, 2XL, 3XL
PRODUCT CODE: HER-POLO

- 150 gsm
- Technical breathable eyelet fabric
- Quick dry moisture management technology
- Antimicrobial fibers to prevent odours developing
- Self-fabric collar with 3 button placket
- Ideal for embroidery or print

MATERIAL: 100% Polyester

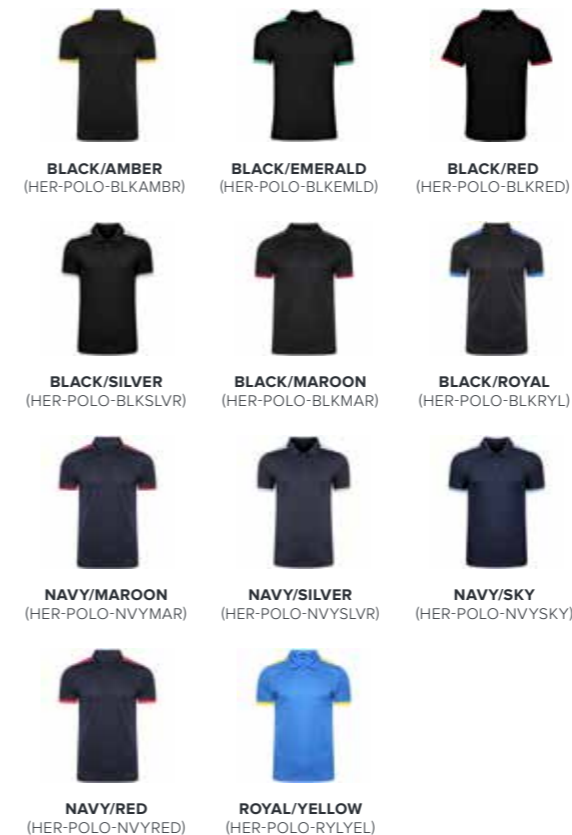
Heritage Tee

KIDS SIZES: XSB, SB, MB, LB, XLB
ADULT SIZES: S, M, L, XL, 2XL, 3XL
PRODUCT CODE: HER-TEE

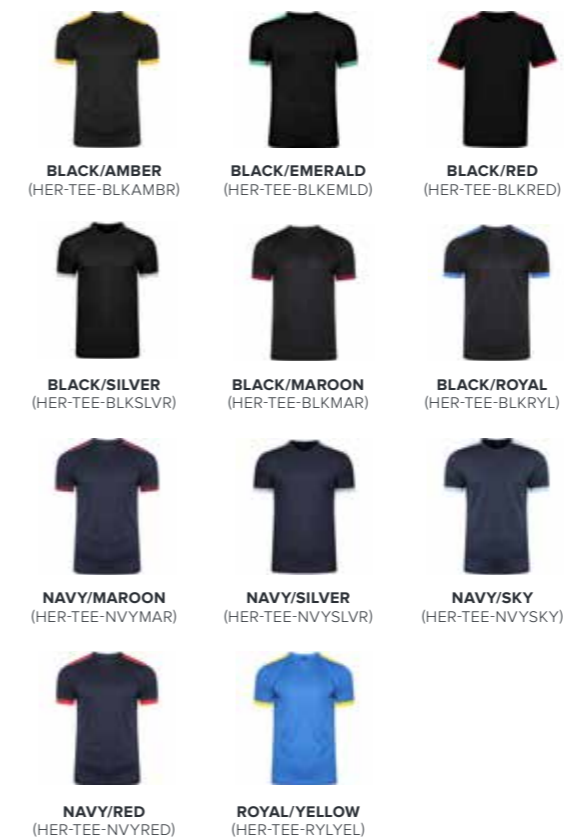
- 150 gsm
- Technical breathable eyelet fabric
- Quick dry moisture management technology
- Antimicrobial fibres to prevent odours developing
- Sports crew neck with set in sleeves
- Ideal for embroidery or print

MATERIAL: 100% Polyester

Heritage Polo Colours:



Heritage Tee Colours:





Heritage Tech Top

KIDS SIZES: MB, LB, XLB
ADULT SIZES: S, M, L, XL, 2XL, 3XL
PRODUCT CODE: HER-TECHTOP

- 240 gsm
- Tech bonded fabric with water repellent outer
- Quick dry antibacterial coating
- Brushed inner fleece
- ¼ zip neck, dropped tail and bound cuffs

MATERIAL: 100% Polyester

- **BLACK/EMERALD** (HER-TECHTOP-BLKEMLD)
- **BLACK/RED** (HER-TECHTOP-BLKRED)
- **NAVY/SKY** (HER-TECHTOP-NVYSKY)
- **NAVY/RED** (HER-TECHTOP-NVYRED)



Heritage Hoodie

KIDS SIZES: XSB, SB, MB, LB, XLB
ADULT SIZES: S, M, L, XL, 2XL, 3XL
PRODUCT CODE: HER-HOOD

- 240 gsm
- Tech bonded fabric
- Brushed internal fleece
- Contrast shoulder panels with silver reflective piping
- 2 piece hood with contrast hood lining
- 2 zipped side pockets and ¼ zip placket
- Bonded cuff and draw cord hem

MATERIAL: 100% Polyester

- **BLACK/AMBER** (HER-HOOD-BLKAMBR)
- **BLACK/EMERALD** (HER-HOOD-BLKEMLD)
- **BLACK/RED** (HER-HOOD-BLKRED)
- **BLACK/SILVER** (HER-HOOD-BLKSLVR)
- **BLACK/MAROON** (HER-HOOD-BLKMAR)
- **BLACK/ROYAL** (HER-HOOD-BLKRYL)
- **NAVY/MAROON** (HER-HOOD-NVYMAR)
- **NAVY/SILVER** (HER-HOOD-NVYSLVR)
- **NAVY/SKY** (HER-HOOD-NVYSKY)
- **NAVY/RED** (HER-HOOD-NVYRED)
- **ROYAL/YELLOW** (HER-HOOD-RYLVEL)



Pro Track Top

KIDS SIZES: MB, LB, XLB
ADULT SIZES: S, M, L, XL, 2XL, 3XL
PRODUCT CODE: PRO-TKT

- 110 gsm
- PU (Polyurethane) clear coating
- Shower resistant and wind resistant
- Mesh inner lining
- Concealed Hood
- Concealed embroidery access for easy branding

MATERIAL: 100% Polyester Ripstop

- **BLACK/AMBER** (PRO-TKT-BLKAMBR)
- **BLACK/ EMERALD** (PRO-TKT-BLKEMLD)
- **BLACK/RED** (PRO-TKT-BLKRED)
- **BLACK/SILVER** (PRO-TKT-BLKSLVR)
- **BLACK/MAROON** (PRO-TKT-BLKMAR)
- **BLACK/ROYAL** (PRO-TKT-BLKRYL)
- **NAVY/MAROON** (PRO-TKT-NVYMAR)
- **NAVY/SILVER** (PRO-TKT-NVYSLVR)
- **NAVY/SKY** (PRO-TKT-NVYSKY)
- **NAVY/RED** (PRO-TKT-NVYRED)



Pro Windbreaker

KIDS SIZES: MB, LB, XLB
ADULT SIZES: S, M, L, XL, 2XL, 3XL
PRODUCT CODE: PRO-TRN

- 110 gsm
- PU (Polyurethane) clear coating
- Shower resistant and wind resistant
- Mesh inner lining
- Reinforced seams and draw cord adjusters at hem
- Concealed embroidery access for easy branding

MATERIAL: 100% Polyester Ripstop

- **BLACK/ EMERALD** (PRO-TRN-BLKEMLD)
- **BLACK/AMBER** (PRO-TRN-BLKAMBR)
- **BLACK/RED** (PRO-TRN-BLKRED)
- **BLACK/SILVER** (PRO-TRN-BLKSLVR)
- **BLACK/MAROON** (PRO-TRN-BLKMAR)
- **BLACK/ROYAL** (PRO-TRN-BLKRYL)
- **NAVY/MAROON** (PRO-TRN-NVYMAR)
- **NAVY/SILVER** (PRO-TRN-NVYSLVR)
- **NAVY/SKY** (PRO-TRN-NVYSKY)
- **NAVY/RED** (PRO-TRN-NVYRED)



Team Hoodie

KIDS SIZES: XSB, SB, MB, LB, XLB
ADULT SIZES: S, M, L, XL, 2XL, 3XL
PRODUCT CODE: CT-HOOD

- 300 gsm
- Ribbed cuff and hem
- Large kangaroo pocket
- Chunky draw cords
- Contrast hood lining

MATERIAL: 80% Polyester 20% Cotton

- **BLACK/AMBER** (CT-HOOD-BLKAMBR)
- **BLACK/ EMERALD** (CT-HOOD-BLKEMLD)
- **BLACK/RED** (CT-HOOD-BLKRED)
- **BLACK/SILVER** (CT-HOOD-BLKSLVR)
- **NAVY/SILVER** (CT-HOOD-NVYSLVR)
- **NAVY/SKY** (CT-HOOD-NVYSKY)
- **ROYAL/YELLOW** (CT-HOOD-RYLYEL)



Training Tee

KIDS SIZES: XSB, SB, MB, LB, XLB
ADULT SIZES: S, M, L, XL, 2XL, 3XL
PRODUCT CODE: CT-TEE

- 150 gsm
- Quick dry moisture management technology
- Jacquard eyelet fabric provides breathability
- Ideal for embroidery or print

MATERIAL: 100% Polyester Jacquard

- **BLACK/ EMERALD** (CT-TEE-BLKEMLD)
- **BLACK/AMBER** (CT-TEE-BLKAMBR)
- **BLACK/RED** (CT-TEE-BLKRED)
- **BLACK/SILVER** (CT-TEE-BLKSLVR)
- **WHITE/BLACK** (CT-TEE-WHTBLK)
- **NAVY/SILVER** (CT-TEE-NVYSLVR)
- **NAVY/SKY** (CT-TEE-NVYSKY)
- **ROYAL/YELLOW** (CT-TEE-RYLYEL)

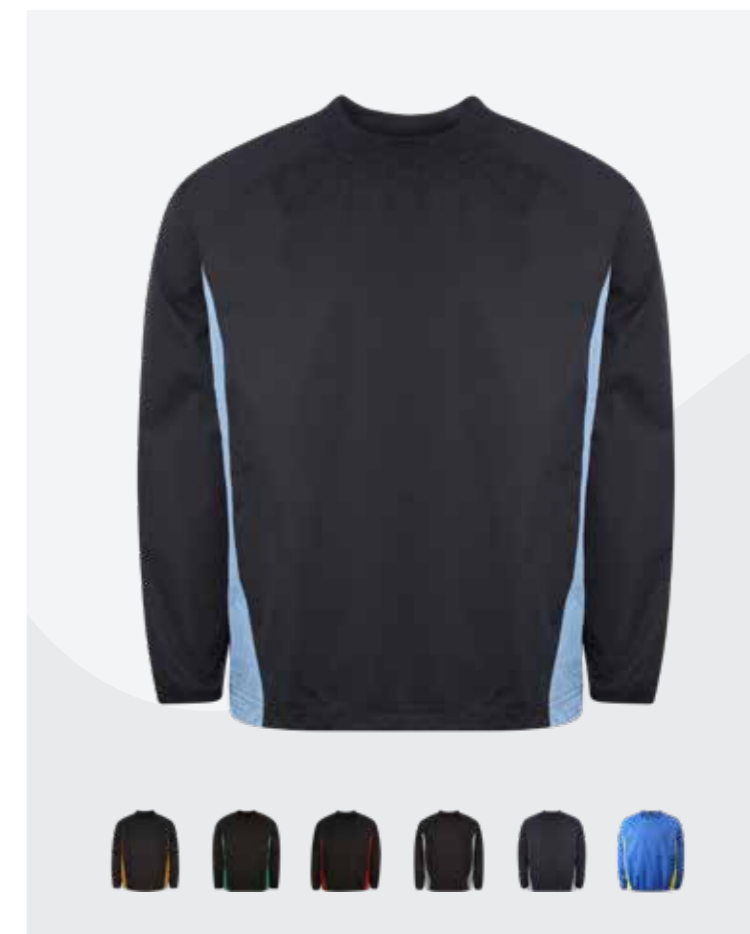
Windbreaker

KIDS SIZES: XSB, SB, MB, LB, XLB
ADULT SIZES: S, M, L, XL, 2XL, 3XL
PRODUCT CODE: CT-TRNTOP

- 110 gsm
- PU (Polyurethane) clear coating
- Mesh inner lining
- Shower resistant and wind resistant
- Reinforced seams and draw cord adjusters at hem
- Concealed embroidery access for easy branding

MATERIAL: 100% Polyester Ripstop

- **NAVY/SKY** (CT-TRNTOP-NVYSKY)
- **BLACK/AMBER** (CT-TRNTOP-BLKAMBR)
- **BLACK/ EMERALD** (CT-TRNTOP-BLKEMLD)
- **BLACK/RED** (CT-TRNTOP-BLKRED)
- **BLACK/SILVER** (CT-TRNTOP-BLKSLVR)
- **NAVY/SILVER** (CT-TRNTOP-NVYSLVR)
- **ROYAL/YELLOW** (CT-TRNTOP-RYLYEL)



Matchday Polo

KIDS SIZES: XSB, SB, MB, LB, XLB
ADULT SIZES: S, M, L, XL, 2XL, 3XL
PRODUCT CODE: CT-POLO

- 150 gsm
- Quick dry moisture management technology
- Jacquard eyelet fabric provides breathability
- Knitted collar with 2 button placket
- Ideal for embroidery or print

MATERIAL: 100% Polyester Jacquard

- **NAVY/SILVER** (CT-POLO-NVYSLVR)
- **BLACK/RED** (CT-POLO-BLKRED)
- **BLACK/AMBER** (CT-POLO-BLKAMBR)
- **BLACK/ EMERALD** (CT-POLO-BLKEMLD)
- **BLACK/SILVER** (CT-POLO-BLKSLVR)
- **WHITE/BLACK** (CT-POLO-WHTBLK)
- **NAVY/SKY** (CT-POLO-NVYSKY)
- **ROYAL/YELLOW** (CT-POLO-RYLYEL)



Track Top

KIDS SIZES: XSB, SB, MB, LB, XLB
ADULT SIZES: S, M, L, XL, 2XL, 3XL
PRODUCT CODE: CT-TKTOP

- 110 gsm
- PU (Polyurethane) clear coating
- Mesh inner lining
- Shower resistant and wind resistant
- Concealed hood
- Concealed embroidery access for easy branding

MATERIAL: 100% Polyester Ripstop

- **BLACK/ EMERALD** (CT-TKTOP-BLKEMLD)
- **BLACK/AMBER** (CT-TKTOP-BLKAMBR)
- **BLACK/RED** (CT-TKTOP-BLKRED)
- **BLACK/SILVER** (CT-TKTOP-BLKSLVR)
- **NAVY/SILVER** (CT-TKTOP-NVYSLVR)
- **NAVY/SKY** (CT-TKTOP-NVYSKY)
- **ROYAL/YELLOW** (CT-TKTOP-RYLYEL)



Leisure Short

KIDS SIZES: MB, LB
ADULT SIZES: XS, S, M, L, XL, 2XL, 3XL
PRODUCT CODE: LEIS-SHORT

- 120 gsm
- 4 Way stretch
- 3 Zipped pockets
- Elasticated drawstring waist
- Unisex fit

MATERIAL: 92% Polyester, 8% Elastane



Pro Rugby Short

KIDS SIZES: XSB, SB, MB, LB, XLB
ADULT SIZES: S, M, L, XL, 2XL, 3XL, 4XL
PRODUCT CODE: PRO-RUGBYSHT

- 250 gsm
- Elastane side panels and gusset
- Gripper elastic to the inner waistband
- Internal gum shield pocket

MATERIAL: 92% Polyester, 8% Elastane ripstop fabric



Training Short

KIDS SIZES: XSB, SB, MB, LB, XLB
ADULT SIZES: S, M, L, XL, 2XL, 3XL
PRODUCT CODE: CT-SHORT

- 110 gsm
- Mesh lining inner
- Elasticated waistband
- Integrated draw cord adjuster
- Two side pockets with concealed zips on all adult shorts

MATERIAL: 100% Polyester ripstop



Rugby Short

KIDS SIZES: XSB, SB, MB, LB, XLB
ADULT SIZES: S, M, L, XL, 2XL, 3XL
PRODUCT CODE: CT-RUGBYNEW

- 250 gsm
- Elastane side panels and gusset
- Gripper elastic to inner waistband
- Internal gum shield pocket

MATERIAL: 100% Polyester Twill





Skinny Pant

KIDS SIZES: XSB, SB, MB, LB, XLB
ADULT SIZES: S, M, L, XL, 2XL, 3XL
PRODUCT CODE: CT-SKINYPANT

- 240 gsm
- Tech bonded fabric with water repellent outer
- Quick dry antibacterial coating
- Brushed inner fleece
- 2 zipped side pockets & leg zip

MATERIAL: 100% Polyester

- **BLACK** (CT-SKINYPANT-BLK)
- **NAVY** (CT-SKINYPANT-NVY)



Leisure Pant

ADULT SIZES: XS, S, M, L, XL, 2XL, 3XL
PRODUCT CODE: LEIS-PANT

- 120 gsm
- 4 way stretch
- Three zipped pockets
- Integrated draw cord
- Side ankle zipped

MATERIAL: 92% Polyester, 8% Elastane



BLACK
(LEIS-PANT-BLK)



NAVY
(LEIS-PANT-NVY)

Tech Top

KIDS SIZES: MB, LB, XLB
ADULT SIZES: S, M, L, XL, 2XL
PRODUCT CODE: CT-TECHTOP

- 240 gsm
- Tech bonded fabric with water repellent outer
- Quick dry antibacterial coating
- Brushed inner fleece
- ¼ zip neck, dropped tail and bound cuffs

MATERIAL: 100% Polyester



BLACK
(CT-TECHTOP-BLK)



NAVY
(CT-TECHTOP-NVY)



Track Pant

KIDS SIZES: XSB, SB, MB, LB, XLB
ADULT SIZES: S, M, L, XL, 2XL, 3XL
PRODUCT CODE: CT-PANT

- 110 gsm
- PU (Polyurethane) clear coating
- Mesh inner lining
- Shower resistant and wind resistant
- Two zipped side pockets
- ¾ length side leg zips

MATERIAL: 100% Polyester Ripstop



BLACK
(CT-PANT-BLK)



NAVY
(CT-PANT-NVY)





Stadium Jacket

ADULT SIZES: XS, S, M, L, XL, 2XL, 3XL
PRODUCT CODE: CT-STADJKT

- 110 gsm
- ¾ length
- Water resistant with quilted lining
- 2 side zipped pockets
- Ideal for embroidery

MATERIAL: 100% Polyester Ripstop



BLACK/SILVER
 (CT-STADJKT-BKSLV)



NAVY/SILVER
 (CT-STADJKT-NVYSLV)

Sub Coat

KIDS SIZES: BOYS (OS), YOUTH (OS)
ADULT SIZES: S/M, L/XL, 2XL/3XL
PRODUCT CODE: CT-SUBCOAT

- 110 gsm
- Full length
- Wind resistant with quilted lining
- 2 side zipped pockets
- Ideal for embroidery

MATERIAL: 100% Polyester Ripstop



BLACK/SILVER
 (CT-SUBCOAT-BLK)



NAVY/SILVER
 (CT-SUBCOAT-NVY)



Matchday Jacket

KIDS SIZES: MB, LB, XLB
ADULT SIZES: XS, S, M, L, XL, 2XL, 3XL, 4XL
PRODUCT CODE: CT-MATCHJKT

- 110 gsm
- Water repellent finish
- Padded jacket with decoration access
- Behrens Active tear out labels

MATERIAL: 100% Polyester

- **BLACK** (CT-MATCHJKT-BLK)
- **NAVY** (CT-MATCHJKT-NVY)



Short Sleeve Cricket Shirt

KIDS SIZES: XSB, SB, MB, LB, XLB
ADULT SIZES: S, M, L, XL, 2XL, 3XL
PRODUCT CODE: CT-SSCRICK

- Quick drying moisture management technology
- Knitted collar with 2 button placket
- Breathable mesh underarm panels
- Ideal for embroidery or print

MATERIAL: 100% Polyester Jacquard

● **IVORY** (CT-SSCRICK-IVORY)

Cricket Trousers

KIDS SIZES: XSB, SB, MB, LB, XLB
ADULT SIZES: S, M, L, XL, 2XL, 3XL
PRODUCT CODE: CT-CRICKPANT

- 250 gsm
- Jacquard eyelet fabric provides breathability
- Quick drying moisture management technology
- 2 side pockets
- Unfinished leg (webbing provided to tailor)

MATERIAL: 100% Poly Twill

● **IVORY** (CT-CRICKPANT-IVORY)
 ● **BLACK** (CT-CRICKPANT-BLACK)
 ● **NAVY** (CT-CRICKPANT-NAVY)



Long Sleeve Cricket Shirt

ADULT SIZES: S, M, L, XL, 2XL
PRODUCT CODE: CT-LSCRICK

- Quick drying moisture management technology
- Knitted collar with 2 button placket
- Long sleeve with ribbed cuff
- Breathable mesh underarm panels
- Ideal for embroidery or print

MATERIAL: 100% Polyester Jacquard

● **IVORY** (CT-LSCRICK-IVORY)

Club Cricket Pant

KIDS SIZES: XSB, SB, MB, LB, XLB
ADULT SIZES: S, M, L, XL, 2XL
PRODUCT CODE: CT-CLUBPANT

- 240 gsm
- Soft feel wicking polyester
- Quick drying moisture management technology
- 2 side pockets
- Unfinished leg (webbing provided to tailor)

MATERIAL: 100% Polyester

● **IVORY** (CT-CLUBPANT-IVORY)





Cricket Slipover

KIDS SIZES: XSB, SB, MB, LB, XLB
ADULT SIZES: S, M, L, XL, 2XL, 3XL
PRODUCT CODE: CT-CRIKSLIP

- Quick drying moisture management technology
- Internal micro-fleece layer provides warmth and comfort
- Ribbed armholes
- V-neck ribbed collar and hem

MATERIAL: 100% Polyester

• **IVORY** (CT-CRIKSLIP-IVORY)

Cricket Jumper

ADULT SIZES: S, M, L, XL, 2XL
PRODUCT CODE: CT-CRIKJUMP

- Quick drying moisture management technology
- Internal micro-fleece layer provides warmth and comfort
- V-neck ribbed collar and hem
- Long sleeve with ribbed cuff

MATERIAL:
 100% Polyester

• **IVORY** (CT-CRIKJUMP-IVORY)





Player Backpack

ADULT SIZES: ONE SIZE
PRODUCT CODE: PLAYER-BACKPACK

- 600D premier weather proof outer fabric
- Padded adjustable straps and top grab handle
- Large 20L zipped main compartment
- Separate zipped boot base
- 2 mesh water bottle side pouches
- Zipped front valuables pocket
- Built for embroidery access

MATERIAL: 100% Polyester



BLACK/SILVER
 (PLAYER-BACKPACK-BLK)



NAVY/SILVER
 (PLAYER-BACKPACK-NVY)

Rucksack

ADULT SIZES: ONE SIZE
PRODUCT CODE: RUCKSACK

- 600D premier weather proof outer fabric
- Padded lower back and straps
- Large 25L zipped main compartment
- Circular zipped front pocket
- 2 zipped side pockets
- Small zipped valuables pocket to the front
- Adjustable strap with mobile phone pocket

MATERIAL: 100% Polyester



BLACK/SILVER
 (RUCKSACK-BLK-SLVR)



NAVY/SILVER
 (RUCKSACK-NVY-SLVR)



Player Holdall

ADULT SIZES: M, L
PRODUCT CODE: HOLDALL

- 600D Premier weather proof outer fabric
- Padded adjustable shoulder strap and 2 top grab handles
- Hard-wearing rubber base grips
- Built for embroidery access
- Medium (54cm x 26cm) - 50L main & separate zipped boot base
- Large (62cm x 31cm) - 80L main & separate zipped boot base

MATERIAL: 100% Polyester

● **BLACK/ SILVER** (HOLDALL-BLK)

● **NAVY/ SILVER** (HOLDALL-NVY)



Wheelie Team Kitbag

ADULT SIZES: ONE SIZE
PRODUCT CODE: CT-WHEELIE

- 600D Premier weather proof outer fabric
- Heavy Duty Base panel with extendable luggage handle
- 140L (76cm x 46cm) main zipped compartment with zipped side pocket
- Shatter proof nylon wheels with rubber base grips
- Heavyweight grab handles to the top with shoulder strap
- Built for embroidery access

MATERIAL: 100% Polyester

● **NAVY** (CT-WHEELIE-NVY)

● **BLACK** (CT-WHEELIE-BLK)



XL Team Kitbag

ADULT SIZES: XL
PRODUCT CODE: KITBAG

- 600D premier weatherproof outer
- Padded adjustable shoulder strap and grab handle
- Large 150L (82cm x 40cm) zipped main compartment
- Hard-wearing rubber base grips
- Built for embroidery access

MATERIAL: 100% Polyester

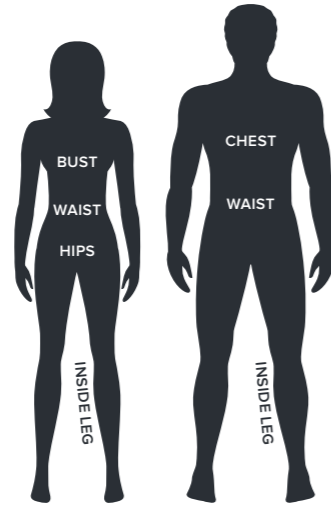
● **BLACK/ SILVER** (KITBAG-BLACK-SILVER)



Size Guides

A garment that fits correctly ensures freedom of movement and comfort for the wearer.

Please follow our easy guide for a correct fitting garment.



Bust/Chest - Measure over the fullest part, under the arms and straight across the back.

Waist - Measure around the natural waistline.

Hips - Measure around the fullest part of the lower body.

Healthcare Size Guide

Female Size Chart - Dress & Tunic

Dress Size	4	6	8	10	12	14	16	18	20	22	24	26	28	30
Bust ins	30	31	32	34	36	38	40	42	44	46	48	50	52	54
Bust cm	76	79	81.5	86.5	91.5	96.5	101.5	106.5	111.5	116.5	121.5	126.5	131.5	136.5
Hips ins	33	34	35	37	39	41	43	45	47	49	51	53	55	57
Hips cm	83.5	86.5	89	94	99	104	109	114	119	124	129	134	139	144

Female Size Chart - Trouser

Trouser Size	4	6	8	10	12	14	16	18	20	22	24	26	28	30
Waist ins	24	26	27	29	30	32	33	34	35	37	39	40	42	44
Waist cm	61	65	69	73	77	81	84	85	90	94	98	102	106	111

Inside leg length - Short: 27" / Regular 29" / Tall: 31" / Extra Tall: 33" / Unhemmed: 35"

Male Size Chart - Tunic & Trouser

Chest Size	32	34	36	38	40	42	44	46	48	50	52	54		
Alpha Size	XS	S	M	L	XL	2XL	3XL							
Chest ins	32	34	36	38	40	42	44	46	48	50	52	54		
Chest cm	81	86	92	97	102	107	112	117	122	127	132	137		
Trouser Size	28	30	32	34	36	38	40	42	44	46	48	50	52	54
Waist ins	28	30	32	34	36	38	40	42	44	46	48	50	52	54
Waist cm	71	76	81	86	92	97	102	107	112	117	122	127	132	137

Inside leg length - Short: 29" / Regular 31" / Tall: 33" / Unhemmed: 35"

Unisex Smart Scrub Suit - Tunic & Trouser

Tunic Size	XXS	XS	S	M	L	XL	2XL	3XL
Chest ins	26	30	34	38	41	46	50	54
Chest cm	66	76	86	97	107	117	127	137
Trouser Size	XXS	XS	S	M	L	XL	2XL	3XL
Waist ins	26-28	28-30	30-32	34-36	36-38	38-40	42-44	46-48
Waist cm	66-71	71-76	76-81	86-92	92-97	97-102	107-112	117-122

Inside leg length - Short: 29" / Regular 31" / Tall: 33"

Unisex Reversible Scrub Suit - Tunic & Trouser

Tunic Size	XS	S	M	L	XL	2XL	3XL
Chest ins	30-32	34-36	38-40	42-44	46-48	50-52	54-56
Chest cm	76-82	86-91	96-102	107-112	117-122	127-132	137-142
Trouser Size	XS	S	M	L	XL	2XL	3XL
Waist ins	28-30	32-34	36-38	40-42	44-46	48-50	52-54
Waist cm	71-76	81-86	91-96	102-107	112-117	122-127	132-137

Simki Size Guide

Ladies Tunics

SIMKI SIZE	NUMERIC SIZE	TO FIT BUST (CM)	NOVA BODY LENGTH (SHOULDER TO HEM)**	ARI BODY LENGTH (SHOULDER TO HEM)**
2XS	6	80 - 84	64	71
XS	8	85 - 88	65	72
S	10	88 - 92	66	73
M	12	92 - 96	67	74
L	14	96 - 100	68.5	75.5
XL	16	100 - 104	70	77
2XL	18	104 - 109	71.5	78.5
3XL	20	109 - 120	73	80

Ladies Trousers

SIMKI SIZE	NUMERIC SIZE	INSIDE LEG LENGTH (CM)**	WAISTBAND (CM)**
2XS	6	73	70
XS	8	73.5	75
S	10	74	80
M	12	74.5	86
L	14	75	92
XL	16	75.5	98
2XL	18	76	104
3XL	20	76.5	110

Mens Tunics

SIMKI SIZE	TO FIT CHEST (CM)	SHOULDER TO HEM (CM)**
XS	84-90	69
S	90-96	71
M	96-102	72.5
L	102-108	74
XL	108-113	75.5
2XL	113-119	77
3XL	119-125	78.5

Mens Trousers

SIMKI SIZE	JOGGER INSIDE LEG LENGTH (CM)**	STRAIGHT LEG LENGTH (CM)**	WAISTBAND (CM)**
XS	78.5	77	72
S	79	77.5	77
M	79.5	78	82
L	80	78.5	88
XL	80.5	79	94
2XL	81	79.5	100
3XL	81.5	80	106

** Please note, these are garment measurements to be used as a guide

Beautywear Size Guide

Women

	6	8	10	12	14	16	18	20	22	24	26	28	30	32	34	36
Bust (cm)	91.0	96.0	101.0	106.0	111.0	116.0	122.0	128.0	134.0	140.0	146.0	152.0	158.0	164.0	170.0	176.0
Waist (cm) (41 cms from neck seam)	71.0	76.0	81.0	86.0	91.0	96.0	102.0	108.0	114.0	120.0	126.0	132.0	138.0	144.0	150.0	156.0
Hem circumference (cm) (Hips)	95.0	100.0	105.0	110.0	115.0	120.0	126.0	132.0	138.0	144.0	150.0	156.0	162.0	168.0	174.0	180.0
Across back (cm)	35.9	37.1	38.3	39.5	40.7	41.9	43.4	44.9	46.4	47.9	49.4	50.9	52.4	53.9	55.4	56.9
CB length (cm)	77.2	78.4	78.8	79.0	79.6	80.2	80.8	81.4	82	82.6	83.2	83.8	84.4	85	85.6	86.4
Crown to cuff (cm)	19.2	19.8	20.4	21.0	21.6	22.2	22.8	23.4	24.0	24.6	25.2	25.8	26.4	27.0	27.6	28.2
Sleeve opening (cm)	32.4	33.6	34.8	36.0	37.2	38.4	39.9	41.4	42.9	44.4	45.9	47.4	48.9	50.4	51.9	53.4

Men

	XS	S	M	L	XL
Chest (cm)	94.5	104.5	114.5	124.5	134.5
Hem circumference (cm)	92.5	102.5	112.5	122.5	132.5
Back (cm)	42.0	44.5	47.0	49.5	52.0

Women Trousers

	6	8	10	12	14	16	18	20	22	24	26	28	30	32
Waist (cm)	71.5	76.5	81.5	86.5	91.5	96.5	101.5	106.5	111.5	116.5	121.5	126.5	131.5	136.5
Front Rise (cm)	27.0	27.7	28.3	28.9	29.9	30.9	31.9	32.9	33.9	34.9	35.9	36.9	37.9	38.9
Back Rise (cm)	36.5	37.1	37.8	38.4	39.4	40.4	41.3	42.3	43.3	44.3	45.2	46.2	47.2	48.2
Hips (cm)	92.0	97.0	102.0	107.0	112.0	117.0	122.0	127.0	132.0	137.0	142.0	147.0	152.0	157.0
Knee (cm)	41.4	42.6	43.8	45.0	46.2	47.4	48.6	49.8	51.0	52.2	53.4	54.6	55.8	57.0
Hem (cm)	41.4	42.6	43.8	45.0	46.2	47.4	48.6	49.8	51.0	52.2	53.4	54.6	55.8	57.0
Inside Leg short 29"	74.0	74.0	74.0	74.0	74.0	74.0	74.0	74.0	74.0	74.0	74.0	74.0	74.0	74.0
Inside Leg reg 31"	79.0	79.0	79.0	79.0	79.0	79.0	79.0	79.0	79.0	79.0	79.0	79.0	79.0	79.0
Inside Leg long 33"	84.0	84.0	84.0	84.0	84.0	84.0	84.0	84.0	84.0	84.0	84.0	84.0	84.0	84.0

Chefswear Size Guide

Tops

Size	2XS	XS	S	M	L	XL	2XL	3XL	4XL
Chest ins	26 - 28	30 - 32	34 - 36	38 - 40	42 - 44	46 - 48	50 - 52	54 - 56	58 - 60
Chest cm	66 - 71	76 - 82	86 - 91	96 - 102	107 - 112	117 - 122	127 - 132	137 - 142	147 - 152

Trousers

Size	2XS	XS	S	M	L	XL	2XL	3XL	4XL
Waist ins	24 - 26	28 - 30	32 - 34	36 - 38	40 - 42	44 - 46	48 - 50	52 - 54	56 - 58
Waist cm	61 - 66	71 - 76	81 - 86	91 - 96	102 - 107	112 - 117	122 - 127	132 - 137	142 - 147

Sportswear Size Chart

Adults

	S	M	L	XL	2XL	3XL
Chest ins	34-36	38-40	42-44	46-48	50-52	54-56
Waist ins	30-32	32-34	34-36	36-38	40-42	44-46

Children's

Age Guide	5/6yrs	7/8yrs	8/9yrs	9/10yrs	11/12yrs
(Non VATable)	XSB	SB	MB	LB	XLB
Chest ins	26	28	30	32	34
Waist ins	22	24	26	28	30

BEH-3522M - Men's Pique Polo

	XS	S	M	L	XL	2XL	3XL	4XL
Chest cm	84-89	90-94	96-101	102-107	108-113	114-119	120-125	126-131
Waist ins	33-35	35-37	38-40	40-42	42-44	45-47	47-49	49-51

