



SUGDENS
by DOUBLETWO

CLUBCLASS
Europe's finest collection
of business wear for work

Six versatile tailored collections perfect for just about any job. Each collection, in it's own way, offers specific functions that suits various wearers and help express their character and your business to project a professional modern image.

Contents

- | | |
|---|--|
| <p>8 ENVEE COLLECTION</p> <p>“The Freedom Of Movement.”
The most advanced ultra stretch tailoring available for work. Engineered using an ultra tech stretch Poly/Visc/Lycra that stretches in all directions for maximum comfort at work. Stylish, comfortable and performs. Enjoy wearing Envee to work everyday. Worth paying a little more for the best tailoring for work today.</p> | <p>76 ENDURANCE P.V COLLECTION</p> <p>The Endurance P.V. Collection “Simply Made To Perform At Work”. Extreme performance like Endurance but at a more competitive price. The Endurance P.V. Collection is the best performing collection of business tailored clothing you can buy at this price level.</p> |
| <p>32 EVOLUTION COLLECTION</p> <p>The Evolution Collection is tailored from a mid weight Poly/Wool/Lycra fabric. Used in our collections for more than 10 years this is a truly tried and tested collection of Corporate Clothing.</p> <p>Some of Europe’s largest companies wear the Evolution Collection. From the front of house desk at London’s best hotels to a number of high profile transport companies. All enjoy the comfort and high level of Performance that Evolution provides.</p> | <p>88 ENDURANCE COLLECTION</p> <p>The Endurance Collection is made from fine wool mixed with branded low pil polyester to give the ultimate garment performance. At Clubclass when we use the word Performance we mean it. Too many Corporate Clothing providers believe merely adding the word performance to their label makes for a viable performance tailored clothing solution.</p> |
| <p>56 EVERYONE COLLECTION</p> <p>The Everyone Collection is probably Europe’s most popular collection of Corporate Clothing. Practical, stylish and outstanding value.</p> <p>Made from a versatile Poly/Visc/Lycra fabric the Everyone collection will suit almost any business environment from security to fine hotels and all office environments.</p> | <p>102 EVENTS COLLECTION</p> <p>A collection of black trousers, waistcoats and skirts ideal for the demanding environments of hospitality, facilities management and many service sectors. Tailored from a natural stretch Polyester fabric that is designed to look good day in, day out. Wash after wash. Currently worn by 1000’s of satisfied wearers.</p> |

Clubclass has always taken into account the specific needs of people who wear tailored clothing to work everyday. In this brochure we talk about the "Architecture" of tailored clothing. That is because I strongly believe that clothing is similar to the design and construction of a building or car.

The fabric is crucial for looks and performance and we only choose the best from established mills. We then test these to destruction so the wearer doesn't have a problem.

However, much of what makes it work is unseen; it's on the inside of the garment. This is true of all our tailoring. The finest lining and interlining, dyed through buttons and high quality thread. These components are the engine room or skeleton of the clothing and by getting the skeleton right the clothing performs brilliantly.

Once produced to exacting standards our clothing is stored on hangers in a temperature controlled warehouse. We do this because tailored garments will suffer if they get too cold.

Once we are sure the clothing is perfect we support this with high levels of service. Next day delivery and hassle free returns.

I sincerely hope you like the clothing in this brochure and we promise you a rewarding experience if you choose them for your team at work.

Clubclass Corporate Clothing:
Trust. Innovation. Expertise

Douglas Bailey

Managing Director

CCC

SUGDENS
by DOUBLETWO

Proud Suppliers of Clubclass Corporate Clothing

CCC CLUBCLASS



The architecture of fine tailored clothing for the workplace

ROBUST PERFORMANCE

Clubclass select only the finest fabrics and then ensure they reach a minimum standard for abrasion and pilling. The standard is the highest in the industry and matched by few, if any. The quality and dimensions of the interlining and canvas, developed by our in house technician; probably unique to Clubclass , adds shape that lasts and performance that will survive day in day out even in the most demanding roles.

RELIABILITY

The quality of the construction in each garment enables supreme reliability. Each garment is manufactured to the same exacting standards: from the most expensive to the least. Each component that we use is tested extensively. Each piece of the garment is constructed for maximum performance and appearance. For example a small piece of tailors tape applied to the inside of the collar gives shape and strength in a very visual area.

EASY TO LIVE WITH

All pieces of tailored clothing in the Clubclass collections are engineered to withstand creasing and shine. Non will wear through or pill. All pieces are washable in a domestic machine. If wash instructions are followed correctly a minimum iron will restore the clothing to great shape. Clubclass clothing performs day in, day out.

STYLE & COMFORT

6 collections each with a specific job to do. All collections offer classic and fashionable styles and slim, tailored and classic fits to clothe diverse teams. Three collections have Lycra in for comfort and crease recovery. Ervee: "the freedom of movement" offers ultra stretch movement in a formal tailoring collection. The updated style and supreme comfort is perfect for anyone who wants smart tailoring at work.



Did you Know

95% of the polyester used in our collections is made from recycled plastic bottles

Image Above
Strauss Slim Fit Jacket
Puccini Slim Fit Trousers
Black

What is in this brochure and where can you find it?

This brochure showcases 6 collections of tailored clothing for the workplace; all of these are available from stock, no minimums and next day delivery.

Each collection can be found by simply turning to the pages that feature the collection you are interested in. To make this even easier we have tabbed each collection.

On the first page of each collection you will find key facts and brief technical details to help you decide if this is a collection that would work for your team.

The pages that follow the introduction show some of the garments in a lifestyle situation.

The final pages of each collection have a simple overview of all the garments available in that collection with size, colour and fit details (this is the easiest part of the brochure to use for garment selection).

All these collections are washable and are simply made to perform at work.



Image Above
Strauss Slim Fit Jacket
Puccini Slim Fit Trousers
Black



ENVEE

collection

“The Freedom Of Movement.” The most advanced ultra stretch tailoring available for work. Engineered using an ultra tech stretch Poly/Visc/Lycra that stretches and moves with the wearer for maximum comfort at work. Stylish, comfortable and performs. Enjoy wearing Envee to work everyday. Worth paying a little more for the best tailoring for work today

Mid Weight
420 grams
per linear metre

Available in 4 colours
Black
Grey Dot
Navy
Navy Dot

*Image Above –
Ladies*
Larsen Tailored Fit Jacket
King Slim Fit Trousers
Navy Dot

Mens
Strauss Slim Fit Jacket
Puccini Slim Fit Trousers
Navy Dot

Weight 420 grams per linear metre
Durability 100,000 + Rubs on the Martindale test
Pilling Grade 4/5
Aftercare Machine Washable at 40°C
Fabric meets Oeko-Tex standard 100

Navy Dot & Black	Grey Dot & Navy
66% Polyester	68% Polyester
30% Viscose	28% Viscose
4% Lycra	4% Lycra

Image Below—
Ravel Mens Tailored Fit Jacket
Wagner Mens Tailored Fit Trousers
Black

Image Right —
Strauss Mens Slim Fit Jacket
Puccini Mens Slim Fit Trousers
Navy Dot



THE LUXURY
OF MOVEMENT

A technical stretch fabric creating a stylish collection of tailoring for work that stretches and moves with the wearer for maximum comfort at work allowing ultra comfort with a modern business look.



Image –
Sibelius Mens Waistcoat
Wagner Mens Tailored Fit Trousers
Navy Dot



Tailored Fit

A contemporary shape for wearers who want an up to date trouser

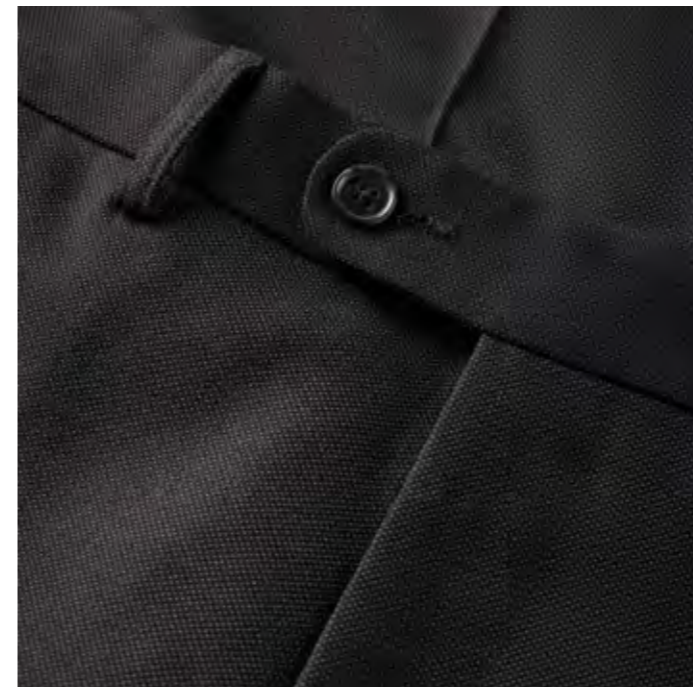


Image Above –
Wagner Mens Tailored Fit Trousers
Navy Dot

Image Left –
Grey Dot Fabric Detail



Image Left –
Mendelssohn Ladies Tailored Fit Jacket
Grey Dot

Images Below –
Smyth Ladies Tailored Fit Jacket
Navy Dot Fabric & Button Detail



THE LUXURY
OF MOVEMENT

A technical stretch fabric creating a stylish collection of tailoring for work that stretches and moves with the wearer for maximum comfort at work allowing ultra comfort with a modern business look.

[View the ladies collection on page 26 — 31](#)

Image Below –
Smyth Ladies Tailored Fit Jacket
Navy



Image –
Larsen Ladies Tailored Fit Jacket
King Slim Fit Trousers
Black



Image –
Montero Ladies Double Breasted Jacket
King Slim Fit Trousers
Navy Dot

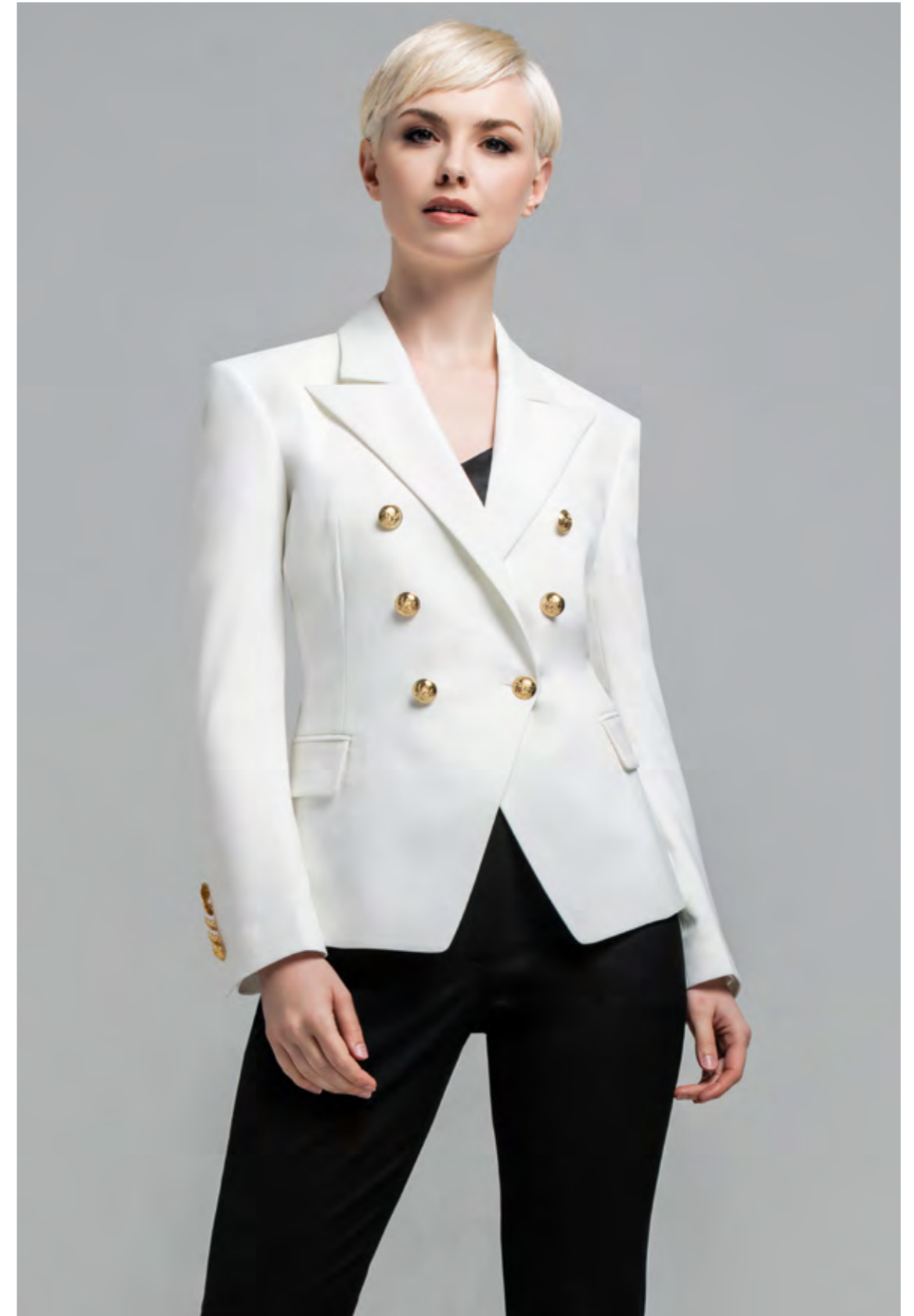


Image –
Montero Ladies Double Breasted Jacket
Ivory
King Slim Fit Trousers
Black

FINDING THE PERFECT TROUSERS



SLIM TAILORED CLASSIC

Finding that right pair of trousers; the right cut, the right fabric and the right colour. Clubclass have designed 3 simple styles that work across our collections. These styles are designed to suit all shapes and sizes.

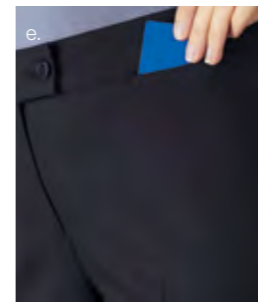


Image Above –
a. Leon Classic Fit Trousers Navy
b. Wolfe Tailored Fit Trousers Navy Dot
c. King Slim Fit Trousers Navy Dot
d. Wolf Tailored Fit Trousers Back & Key Loop Detail
e. Leon Trousers Cash Card Detail



Images –
a. Leonarda Dress in Navy Dot
b. Schumann Dress in Navy Dot
c. Caccini Skirt in Navy Dot

Image –
Strozzi Dress
Black



ENVEE

MENS FULL RANGE



VERDI

Double Breasted Jacket

FEATURES
Centre back vent
Built in pocket square

SIZES
Regular
(UK) 34 – 46
(EU) 44 – 56

Black J8005B Grey Dot J8005GD Navy Dot J8005ND Navy J8005N



SIBELIUS

Waistcoat

FEATURES
5 button fastening
Fabric back

SIZES
Regular
(UK) 34 – 54
(EU) 44 – 64

Black V8002B Grey Dot V8002GD Navy Dot V8002ND Navy V8002N



STRAUSS

Single Breasted Slim Fit Jacket

FEATURES
2 Button fastening
Centre back vent
Built in pocket square

SIZES
Short | Reg | Long
(UK) 32 – 46
(EU) 42 – 56

Black J8004B Grey Dot J8004GD Navy Dot J8004ND Navy J8004N



RAVEL

Single Breasted Tailored Fit Jacket

FEATURES
2 Button fastening
Side vents
Built in pocket square

UK SIZES
34 – 50 Short
34 – 54 Reg
36 – 50 Long

EU SIZES
44 – 60 Short
44 – 64 Reg
46 – 60 Long

Black J8006B Grey Dot J8006GD Navy Dot J8006ND Navy J8006N



PUCCINI

Plain Front Slim Fit Trousers

FEATURES
French bearer
Belt loops
2 Hip pockets
1/2 Lined

UK SIZES
28 – 40 Short
28 – 42 Reg
28 – 40 Long
28 – 42 Un Finished

EU SIZES
44 – 56 Short
44 – 58 Reg
44 – 56 Long
44 – 58 Un Finished

Black T8002B Grey Dot T8002GD Navy Dot T8002ND Navy T8002N



WAGNER

Plain Front Tailored Fit Trousers

FEATURES
French bearer
Belt loops
2 Hip pockets
1/2 Lined

SIZES
Short | Reg
Long | Unfinished
(UK) 28 – 50
(EU) 44 – 66

Black T8004B Grey Dot T8004GD Navy Dot T8004ND Navy T8004N

INSIDE LEG MEASUREMENTS

Short 29"IL 74CM	Regular 31"IL 79CM
Long 33"IL 84CM	Unfinished 37"IL 94CM

GARMENT INFORMATION

Weight 420 grams per linear metre
Durability 100,000 + Rubs on the Martindale test
Pilling Grade 4/5
Aftercare Machine Washable at 40°C
Fabric meets Oeko-Tex standard 100

Navy Dot & Black	Grey Dot & Navy
66% Polyester	68% Polyester
30% Viscose	28% Viscose
4% Lycra	4% Lycra

SIZE GUIDE

Men
Short Men under 5'6" tall
Regular Men between 5'7" & 6'1" tall
Long Men over 6'1" tall

ENVEE

LADIES JACKET RANGE



MENDELSSOHN

Single Breasted Tailored Jacket

FEATURES	UK SIZES	EU SIZES
Cropped jacket	4 – 20 Petite	32 – 48 Petite
2 button fastening	4 – 24 Reg	32 – 52 Reg
4 panel back detail	6 – 24 Long	34 – 52 Long

Black J8002B	Grey Dot J8002GD	Navy Dot J8002ND	Navy J8002N
-----------------	---------------------	---------------------	----------------



LARSEN

Single Breasted Tailored Jacket

FEATURES	UK SIZES	EU SIZES
2 Button fastening	4 – 20 Petite	32 – 48 Petite
Peak lapel	4 – 24 Reg	32 – 52 Reg
Centre back vent	6 – 24 Long	34 – 52 Long

Black J8001B	Grey Dot J8001GD	Navy Dot J8001ND	Navy J8001N
-----------------	---------------------	---------------------	----------------



SMYTH

Single Breasted Tailored Jacket

FEATURES	UK SIZES	EU SIZES
2 button fastening	4 – 20 Petite	32 – 48 Petite
Tulip lapel	4 – 24 Reg	32 – 52 Reg
4 panel back detail	6 – 24 Long	34 – 52 Long

Black J8000B	Grey Dot J8000GD	Navy Dot J8000ND	Navy J8000N
-----------------	---------------------	---------------------	----------------



MAHLER

Waistcoat

FEATURES	SIZES
5 button fastening	Regular
Fabric back	(UK) 4 – 24 (EU) 32 – 52

Black V8000B	Grey Dot V8000GD	Navy Dot V8000ND	Navy V8000N
-----------------	---------------------	---------------------	----------------



MONTERO

Ivory Ladies Double Breasted Jacket

FEATURES	SIZES
Wide peak lapel	Regular
6 "show buttons"	(UK) 6 – 16 (EU) 34 – 44

Ivory J8003V



MONTERO

Ladies Double Breasted Jacket

FEATURES	SIZES
Wide peak lapel	Regular
6 "show buttons"	(UK) 6 – 16 (EU) 34 – 44

Black J8003B	Grey Dot J8003GD	Navy Dot J8003ND	Navy J8003N
-----------------	---------------------	---------------------	----------------

GARMENT INFORMATION

Weight 420 grams per linear metre
 Durability 100,000 + Rubs on the Martindale test
 Pilling Grade 4/5
 Aftercare Machine Washable at 40°C
 Fabric meets Oeko-Tex standard 100

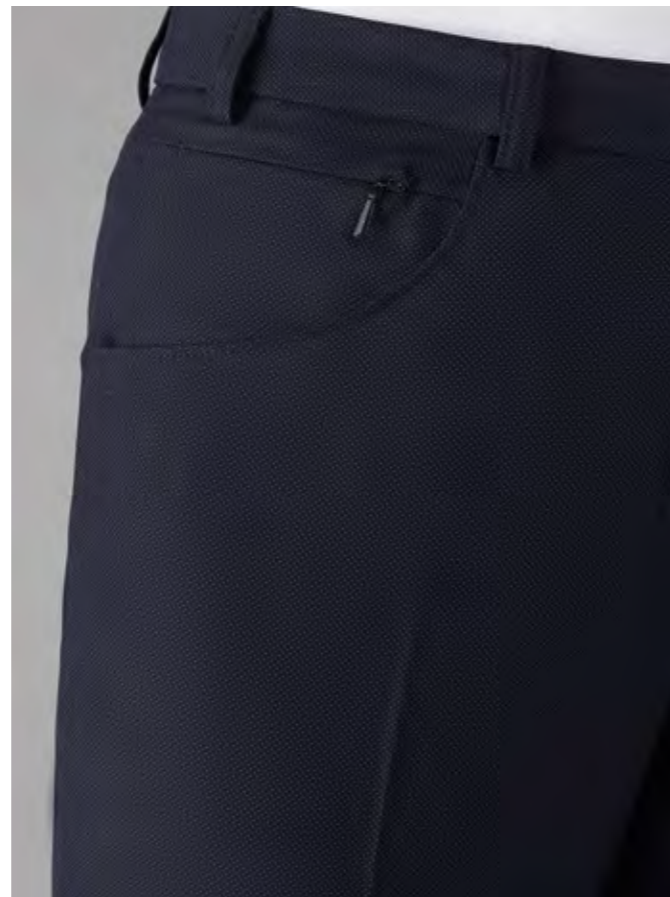
Navy Dot & Black		Grey Dot & Navy	
66%	Polyester	68%	Polyester
30%	Viscose	28%	Viscose
4%	Lyra	4%	Lyra

SIZE GUIDE

Ladies
 Petite Women under 5'2" tall
 Regular Women between 5'3" & 5'9" tall
 Long Women over 5'10" tall

ENVEE

LADIES TROUSER RANGE



KING

Slim Fit Trousers

FEATURES

- Front fastening
- Slim leg
- Zip cash pocket
- Hip pockets
- Belt loops

SIZES

- Petite | Reg | Long
- | Unfinished
- (UK) 4 – 24
- (EU) 32 – 52

Black T8003B Grey Dot T8003GD Navy Dot T8003ND Navy T8003N

Perfect Details

HANDY ZIP POCKET - KING TROUSERS -

WOLFE

Tailored Fit Trousers

FEATURES

- Front fastening
- Curved hip pockets
- Key loop
- Deep waistband

SIZES

- Petite | Reg | Long
- | Unfinished
- (UK) 4 – 24
- (EU) 32 – 52

Black T8001B Grey Dot T8001GD Navy Dot T8001ND Navy T8001N

LEON

Classic Fit Trousers

FEATURES

- Front fastening
- Parallel leg
- Key loop

SIZES

- Petite | Reg | Long
- | Unfinished
- (UK) 4 – 24
- (EU) 32 – 52

Black T8000B Grey Dot T8000GD Navy Dot T8000ND Navy T8000N

INSIDE LEG MEASUREMENTS

Short	Regular
29"IL	31"IL
74CM	79CM
Long	Unfinished
34"IL	37"IL
86CM	94CM

GARMENT INFORMATION

Weight 420 grams per linear metre
 Durability 100,000 + Rubs on the Martindale test
 Pilling Grade 4/5
 Aftercare Machine Washable at 40°C
 Fabric meets Oeko-Tex standard 100

Navy Dot & Black		Grey Dot & Navy	
66%	Polyester	68%	Polyester
30%	Viscose	28%	Viscose
4%	Lycra	4%	Lycra

SIZE GUIDE

Ladies
 Petite Women under 5'2" tall
 Regular Women between 5'3" & 5'9" tall
 Long Women over 5'10" tall



Hem widths are based on size 8



LEONARDA

Dress

FEATURES

Knee length
V neck detail
Fully lined
x2 Zip pockets
Rear vent

SIZES

Regular
(UK) 4 – 24
(EU) 32 - 52

Black D8000B Grey Dot D8000GD Navy Dot D8000ND Navy D8000N



SCHUMANN

Dress

FEATURES

Knee length
Shoulder darts
Hip darts
Fully lined
Rear vent

SIZES

Regular
(UK) 4 – 24
(EU) 32 - 52

Black D8001B Grey Dot D8001GD Navy Dot D8001ND Navy D8001N



STROZZI

Dress

FEATURES

Fashion "cut"
Modern angled panels

SIZES

Regular
(UK) 4 – 24
(EU) 32 - 52

Black D8002B Grey Dot D8002GD Navy Dot D8002ND Navy D8002N



OKOYE

Dress

FEATURES

Polka dot dress
Keyhole neck line

SIZES

Regular
(UK) 4 – 18
(EU) 32 - 46

Polka Dot D8003PD



CACCINI

Pencil Skirt

FEATURES

Pencil skirt
Front seam Detail
Rear centre vent

SIZES

Regular (58cm | 23" length)
Long (64cm | 25" length)
(UK) 4 – 24
(EU) 32 - 52

Black S8000B Grey Dot S8000GD Navy Dot S8000ND Navy S8000N

GARMENT INFORMATION

Weight 420 grams per linear metre
Durability 100,000 + Rubs on the Martindale test
Pilling Grade 4/5
Aftercare Machine Washable at 40°C
Fabric meets Oeko-Tex standard 100

Navy Dot & Black
66% Polyester
30% Viscose
4% Lycra

Grey Dot & Navy
68% Polyester
28% Viscose
4% Lycra

SIZE GUIDE

Ladies
Petite Women under 5'2" tall
Regular Women between 5'3" & 5'9" tall
Long Women over 5'10" tall



EVOLUTION

collection

Tailored from a fabric that is currently being worn by 1000's of happy wearers. Used in our collections for more than 10 years this is a truly tried and tested, mid weight Poly/Wool/Lycra.

Some of Europe's largest companies wear the Evolution Collection. From the front of house desk at London's best hotels to a number of high profile transport companies. All enjoy the comfort and high level of Performance that Evolution provides.

Mid Weight 315 grams per linear metre	Available in 3 colours Black Charcoal Navy
--	--

64% Polyester
34% Wool
2% Lycra Weft Stretch

Weight 315 grams per linear metre
Durability 50,000 + Rubs on the Martindale test
Pilling Grade 4/5
Aftercare Machine Washable at 40°C

Fabric meets Oeko-Tex standard 100

Image –
Mens Limehouse Tailored Fit Jacket
Charcoal

Ladies Perivale Dress
Charcoal



Image Right –
Tooting Slim Fit Jacket
Leyton Slim Fit Trousers
Navy

Image Left –
Bond Waistcoat
Leyton Slim Fit Trousers
Navy



Did you Know

95% of the polyester used in our collections is made from recycled plastic bottles



Image Right –
Limehouse Tailored Fit Jacket
Soho Tailored Fit Trousers
Charcoal

Image Below –
Soho Tailored Fit Trousers
Charcoal



Tailored Fit

A contemporary shape for
wearers who want an up to
date trouser



Image Right & Below –
Temple Tailored Fit Jacket
Navy



EVOLUTION



Image Left & Below –
Islington Tailored Fit Jacket
Charcoal

Pentonville Slim Fit Trousers
Charcoal

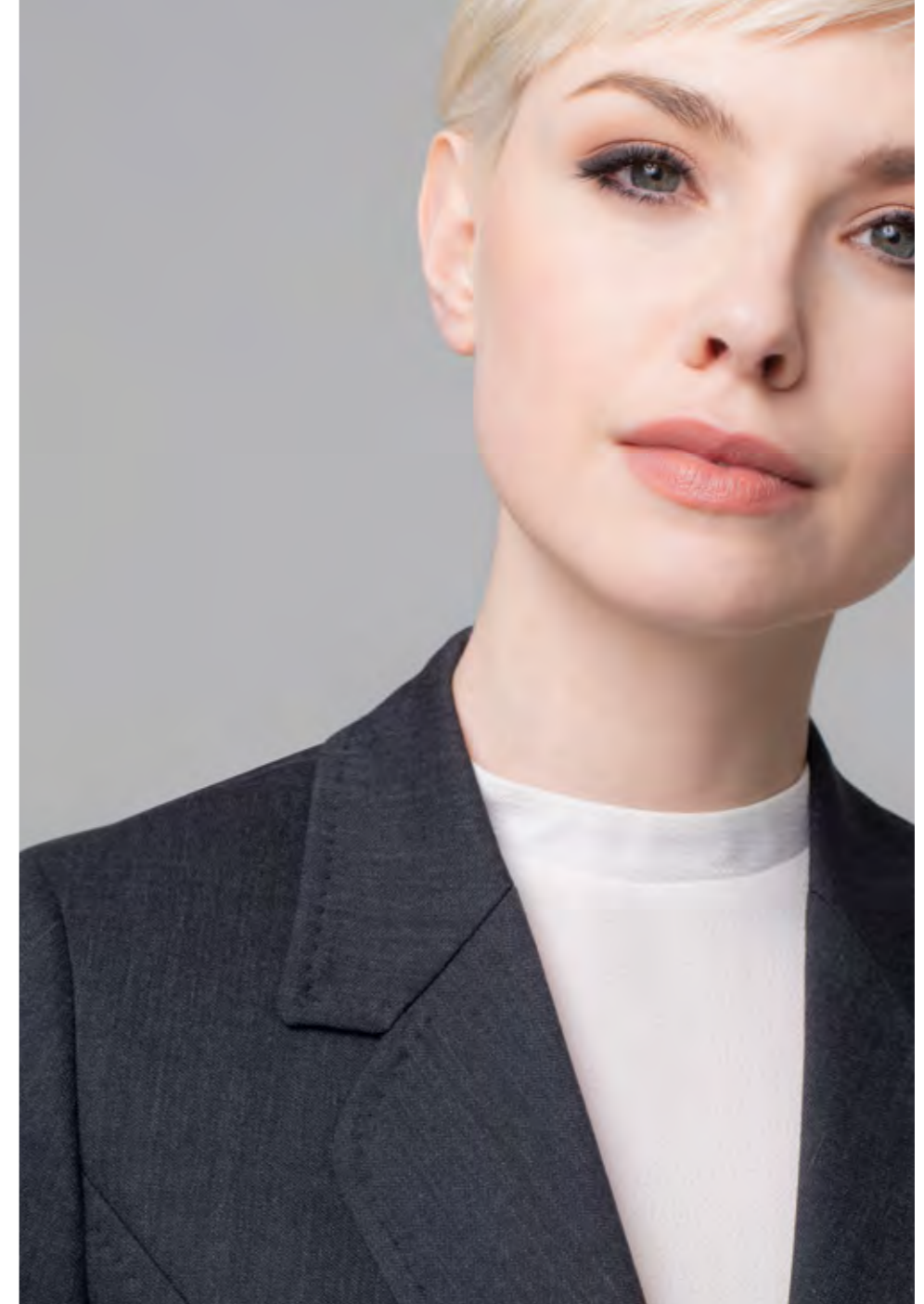




Image Left –
Regent Trousers
Navy

Close Up Detail Of The Cash Pocket
on the Regent Trousers

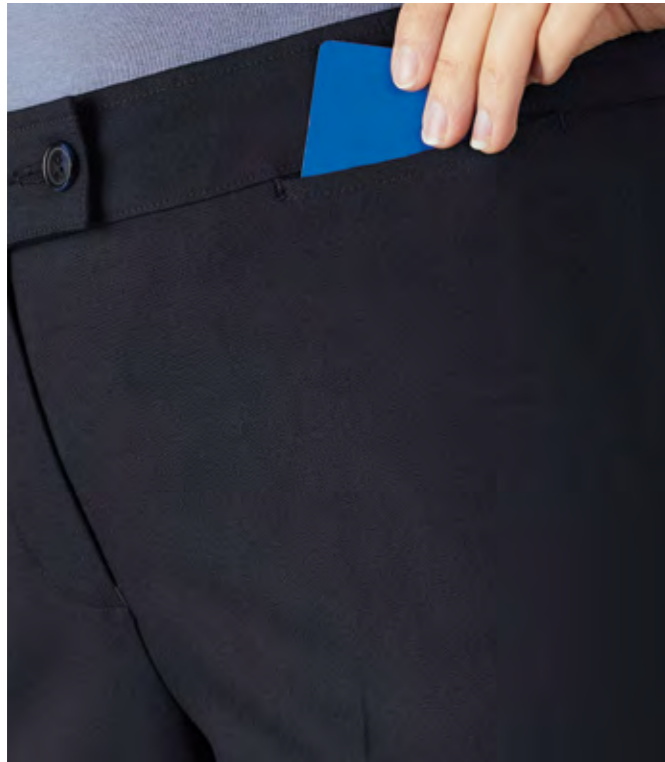


Image Below –
Temple Tailored Fit Jacket
Black





Image Left –
Perivale Dress
Black

Image Below –
Angel Skirt
Charcoal



[View the full ladies collection on pages 50 — 55](#)

EVOLUTION

MENS JACKET & WAISTCOAT RANGE



TOOTING

Single Breasted Slim Fit Jacket

FEATURES	SIZES
2 button fastening Side vents	Short Reg Long (UK) 34 – 48 (EU) 44 – 58

Black J6005B	Charcoal J6005C	Navy J6005N
-----------------	--------------------	----------------



LIMEHOUSE

Single Breasted Tailored Fit Jacket

FEATURES	UK SIZES	EU SIZES
2 button fastening Side vents	34 – 48 Short 34 – 50 Reg 36 – 50 Long	44 – 58 Short 44 – 60 Reg 46 – 60 Long

Black J6000B	Charcoal J6000C	Navy J6000N
-----------------	--------------------	----------------



WHITEHALL

Single Breasted Classic Fit Jacket

FEATURES	UK SIZES	EU SIZES
3 button fastening Centre vent	34 – 48 Short 34 – 54 Reg 36 – 48 Long	44 – 58 Short 44 – 64 Reg 46 – 58 Long

Black J6001B	Charcoal J6001C	Navy J6001N
-----------------	--------------------	----------------



BOND

Waistcoat

FEATURES	SIZES
5 button fastening Fabric back	Regular (UK) 34 – 50 (EU) 44 – 60

Black W6004B	Charcoal W6004C	Navy W6004N
-----------------	--------------------	----------------

GARMENT INFORMATION

64%	Polyester	Weight	315 grams per linear metre
34%	Wool	Durability	50,000 + Rubs on the Martindale test
2%	Lyra Weft Stretch	Pilling	Grade 4/5
		Aftercare	Machine Washable at 40°C
		Fabric meets	Oeko-Tex standard 100

SIZE GUIDE

Men	
Short	Men under 5'6" tall
Regular	Men between 5'7" & 6'1" tall
Long	Men over 6'1" tall

EVOLUTION

MENS TROUSER RANGE



LEYTON

Plain Front Slim Fit Trousers

FEATURES	UK SIZES	EU SIZES
French bearer	28 – 40 Short	44 – 56 Short
Belt loops	28 – 42 Reg	44 – 58 Reg
2 Hip pockets	28 – 40 Long	44 – 56 Long
1/2 lined	28 – 42 Un Finished	44 – 58 Un Finished

Black T6006B Charcoal T6006C Navy T6006N

SOHO

Plain Front, Tailored Fit Trousers

FEATURES	SIZES
French bearer	Short Reg
Belt loops	Long Unfinished
2 Hip pockets	(UK) 28 – 50
1/2 Lined	(EU) 44 – 66

Black T6002B Charcoal T6002C Navy T6002N

WESTMINSTER

Single Pleat, Classic Fit Trousers

FEATURES	SIZES
French bearer	Short Reg
Belt loops	Long Unfinished
2 Hip pockets	(UK) 28 – 50
1/2 Lined	(EU) 44 – 66

Black T6003B Charcoal T6003C Navy T6003N

INSIDE LEG MEASUREMENTS

Short	Regular	Long	Unfinished
29"IL	31"IL	33"IL	37"IL
74CM	79CM	84CM	94CM

SIZE GUIDE

Men	
Short	Men under 5'6" tall
Regular	Men between 5'7" & 6'1" tall
Long	Men over 6'1" tall

GARMENT INFORMATION

64%	Polyester	Weight	315 grams per linear metre
34%	Wool	Durability	50,000 + Rubs on the Martindale test
2%	Lycra Weft Stretch	Pilling	Grade 4/5
		Aftercare	Machine Washable at 40°C
		Fabric meets Oeko-Tex standard 100	

EVOLUTION

LADIES JACKET RANGE



ISLINGTON

Single Breasted Tailored Fit Jacket

FEATURES	UK SIZES	EU SIZES
2 button fastening	6 – 16 Petite	34 – 44 Petite
Tulip lapel	6 – 24 Reg	34 – 52 Reg
4 panel back detail	6 – 24 Long	34 – 52 Long

Black	Charcoal	Navy
J3000B	J3000C	J3000N



TEMPLE

Single Breasted Tailored Fit Jacket

FEATURES	UK SIZES	EU SIZES
2 button fastening	4 – 20 Petite	32 – 48 Petite
Peak lapel	6 – 24 Reg	34 – 52 Reg
Centre back vent	6 – 24 Long	34 – 52 Long

Black	Charcoal	Navy
J3013B	J3013C	J3013N



STRAND

Waistcoat

FEATURES	SIZES
4 button fastening	Regular
Fabric back	(UK) 6 – 24
	(EU) 34 – 52

Black	Charcoal	Navy
V3008B	V3008C	V3008N



VICTORIA

Single Breasted Classic Fit Jacket

FEATURES	UK SIZES	EU SIZES
3 button fastening	6 – 16 Petite	34 – 44 Petite
Peak lapel	6 – 24 Reg	34 – 52 Reg
Centre back vent	8 – 24 Long	36 – 52 Long

Black	Charcoal	Navy
J3002B	J3002C	J3002N



BELGRAVIA

Single Breasted Classic Fit Jacket

FEATURES	UK SIZES	EU SIZES
3 button fastening	6 – 16 Petite	34 – 44 Petite
Tulip lapel	6 – 24 Reg	34 – 52 Reg
4 Panel back detail	8 – 24 Long	36 – 52 Long

Black	Charcoal	Navy
J3001B	J3001C	J3001N



SAVOY

Single Breasted Tailored Tailcoat

FEATURES	UK SIZES
3 button fastening	Regular
	(UK) 6 – 18
	(EU) 34 – 46

Black
J3003B

GARMENT INFORMATION

64%	Polyester	Weight	315 grams per linear metre
34%	Wool	Durability	50,000 + Rubs on the Martindale test
2%	Lycra Weft Stretch	Pilling	Grade 4/5
		Aftercare	Machine Washable at 40°C
			Fabric meets Oeko-Tex standard 100

SIZE GUIDE

Ladies	
Petite	Women under 5'2" tall
Regular	Women between 5'3" & 5'9" tall
Long	Women over 5'10" tall

EVOLUTION

LADIES TROUSER RANGE



PENTONVILLE

Slim Fit Trousers

FEATURES	SIZES
Front fastening	Short Reg Long
Slim leg	Unfinished
x1 Zip cash pocket	(UK) 4 - 24
Hip pockets	(EU) 32 - 52
Belt loops	

Black T3012B Charcoal T3012C Navy T3012N

KENSINGTON

Tailored Fit Trousers

FEATURES	SIZES
Front Fastening	Short Reg Long
2 pockets	Unfinished
Deep waistband	(UK) 6 - 24
1/2 Lined	(EU) 34 - 52

Black T3008B Charcoal T3008C Navy T3008N

REGENT

Tailored Fit Trousers

FEATURES	SIZES
Front fastening	Short Reg Long
Cash pocket	Unfinished
1/2 Lined	(UK) 6 - 24
	(EU) 34 - 52

Black T3007B Charcoal T3007C Navy T3007N

MAYFAIR

Classic Fit Trousers

FEATURES	SIZES
Front fastening	Short Reg Long
Flared leg	Unfinished
Cash pocket	(UK) 6 - 24
1/2 Lined	(EU) 34 - 52

Black T3006B Charcoal T3006C Navy T3006N

GARMENT INFORMATION

64%	Polyester	Weight	315 grams per linear metre
34%	Wool	Durability	50,000 + Rubs on the Martindale test
2%	Lycra Weft Stretch	Pilling	Grade 4/5
		Aftercare	Machine Washable at 40°C
		Fabric	meets Oeko-Tex standard 100

INSIDE LEG MEASUREMENTS

Short	Regular	Long	Unfinished
29"IL	31"IL	34"IL	37"IL
74CM	79CM	86CM	94CM

IN BETWEEN SIZES

Sizes 11 & 13 also available

SIZE GUIDE

Ladies	
Petite	Women under 5'2" tall
Regular	Women between 5'3" & 5'9" tall
Long	Women over 5'10" tall



Hem widths are based on size 8

EVOLUTION

LADIES DRESSES & SKIRTS



PERIVALE

Dress

FEATURES

Knee length
V neck detail
Fully lined
x2 Zip pockets
Rear vent

SIZES

Regular
(UK) 4 – 24
(EU) 32 – 52

Black D3011B Charcoal D3011C Navy D3011N



SLOANE

Dress

FEATURES

Knee length
Shoulder darts
Hip darts
Fully lined
Rear vent

SIZES

Regular
(UK) 4 – 24
(EU) 32 – 52

Black D3009B Charcoal D3009C Navy D3009N



ANGEL

Pencil Skirt

FEATURES

Pencil skirt
Front seam detail
Rear centre vent

SIZES

Regular (58cm | 23" length)
Long (64cm | 25" length)
(UK) 6 – 24
(EU) 34 – 52

Black S3004B Charcoal S3004C Navy S3004N



PIMLICO

Longline Skirt

FEATURES

Longline skirt
Front & rear vent

SIZES

Regular (86cm | 34" length)
(UK) 6 – 24
(EU) 34 – 52

Black S3005B Charcoal S3005C Navy S3005N

GARMENT INFORMATION

64%	Polyester	Weight	315 grams per linear metre
34%	Wool	Durability	50,000 + Rubs on the Martindale test
2%	Lyra Weft Stretch	Pilling	Grade 4/5
		Aftercare	Machine Washable at 40°C
			Fabric meets Oeko-Tex standard 100

SIZE GUIDE

Ladies
Petite Women under 5'2" tall
Regular Women between 5'3" & 5'9" tall
Long Women over 5'10" tall

Image Below Ladies –
Ladies Hoxton Slim Fit Jacket
Chiswick Slim Fit Trousers
Navy

Image Below Mens –
Mens Aldgate Slim Fit Jacket
Mens Edgware Slim Fit Trousers
Navy



EVERYONE

collection

Europe's most popular collection of corporate clothing. A durable, midweight collection of mix and match tailored suiting, for professionals who require modern clothing that works. The Everyone collection will suit almost any business environment from security to fine hotels and all office environments.

Mid Weight
315 grams
per linear metre

Available in 4 colours
Light Grey
Charcoal
Black
Navy

64% Polyester
34% Viscose
2% Lycra Weft Stretch

Weight 315 grams per linear metre
Durability 145,000 + Rubs on the Martindale test
Pilling Grade 4/5
Aftercare Machine Washable at 40°C

Fabric meets Oeko-Tex standard 100

Image Below –
Mens Aldgate Slim Fit Jacket
Mens Edgware Slim Fit Trousers
Black



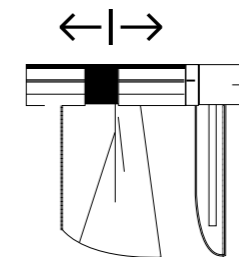
Image Below –
Mens Aldgate Slim Fit Jacket
Mens Edgware Slim Fit Trousers
Light Grey





Image Left –
Farringdon Tailored Fit Jacket
Harrow Tailored Fit Trousers
Charcoal

Image Below –
Putney Easy Waist Tailored Fit Trousers
Charcoal



**EASY WAIST
CONSTRUCTION**

A discreet elastic insert to give waist ease while retaining a formal appearance. The easy waist has no gap in the pockets and is unique to Clubclass .

View the full mens collection on pages 68 — 69

Image Below –
Hoxton Slim Fit Jacket
Chiswick Trousers
Navy



Image Below –
Chiswick Trousers
Charcoal



Did you Know

95% of the polyester used in our collections is made from recycled plastic bottles

Image Below –
Bloomsbury Tailored Fit Jacket
Chiswick Slim Fit Trousers
Charcoal



Image –
Bloomsbury Jacket
Charcoal



EVERYONE



Images –
a. Bethnal Dress in Charcoal
b. Holborn Skirt in Charcoal

Image –
Primrose Dress
Black



EVERYONE

MENS JACKET & TROUSERS RANGE



FARRINGDON

Single Breasted Tailored Fit Jacket

FEATURES

2 button fastening
Side vents

UK SIZES	EU SIZES
34 – 50 Short	44 – 60 Short
34 – 54 Reg	44 – 64 Reg
36 – 50 Long	46 – 60 Long

Light Grey	Charcoal	Black	Navy
J1000LG	J1000C	J1000B	J1000N



ALDGATE

Single Breasted Slim Fit Jacket

FEATURES

2 button fastening
Side vents

UK SIZES	EU SIZES
32 – 46 Short	42 – 56 Short
32 – 46 Reg	42 – 56 Reg
32 – 46 Long	42 – 56 Long

Light Grey	Charcoal	Black	Navy
J1001LG	J1001C	J1001B	J1001N



BOROUGH

Waistcoat

FEATURES

5 button fastening
Fabric back

SIZES
Regular
(UK) 34 – 54
(EU) 44 – 64

Light Grey	Charcoal	Black	Navy
W1004LG	W1004C	W1004B	W1004N

GARMENT INFORMATION

64%	Polyester	Weight	315 grams per linear metre
34%	Viscose	Durability	145,000 + Rubs on the Martindale test
2%	Lycra Weft Stretch	Aftercare	Machine Washable at 40°C
Fabric meets Oeko-Tex standard 100			

SIZE GUIDE

Men	
Short	Men under 5'6" tall
Regular	Men between 5'7" & 6'1" tall
Long	Men over 6'1" tall



HARROW

Plain Front, Tailored Fit Trousers

FEATURES

French bearer
Belt loops
2 Hip pockets
1/2 Lined

SIZES

Short | Reg
Long | Unfinished
(UK) 28 – 50
(EU) 44 – 66

Light Grey	Charcoal	Black	Navy
T1002LG	T1002C	T1002B	T1002N



EDGWARE

Plain Front Slim Fit Trousers

FEATURES

French bearer
Belt loops
2 Hip pockets
1/2 Lined

UK SIZES

28 – 40 Short
28 – 42 Reg
28 – 40 Long
28 – 42 Un Finished

EU SIZES

44 – 56 Short
44 – 58 Reg
44 – 56 Long
44 – 58 Un Finished

Light Grey	Charcoal	Black	Navy
T1003LG	T1003C	T1003B	T1003N



PUTNEY - EASY WAIST

Plain Front, Easy Waist, Tailored Fit Trousers

FEATURES

French bearer
Belt loops
2 Hip pockets
1/2 Lined

SIZES

Short | Reg | Long | Unfinished
(UK) 28 – 50
(EU) 44 – 56

Light Grey	Charcoal	Black	Navy
T2012LG	T2012C	T2012B	T2012N

EVERYONE

LADIES JACKET RANGE



BLOOMSBURY

Single Breasted Tailored Fit Jacket

FEATURES	UK SIZES	EU SIZES
2 button fastening	4 – 20 Petite	32 – 48 Petite
Tulip lapel	4 – 24 Reg	32 – 52 Reg
4 panel back detail	6 – 24 Long	34 – 52 Long

Light Grey J2000LG	Charcoal J2000C	Black J2000B	Navy J2000N
-----------------------	--------------------	-----------------	----------------



FINCHLEY

Single Breasted Tailored Fit Jacket

FEATURES	UK SIZES	EU SIZES
2 button fastening	4 – 20 Petite	32 – 48 Petite
Peak lapel	4 – 24 Reg	32 – 52 Reg
Centre back vent	6 – 24 Long	34 – 52 Long

Light Grey J2001LG	Charcoal J2001C	Black J2001B	Navy J2001N
-----------------------	--------------------	-----------------	----------------



HOXTON

Single Breasted Slim Fit Jacket

FEATURES	UK SIZES	EU SIZES
1 button fastening	6 – 16 Petite	34 – 44 Petite
Peak lapel	4 – 18 Reg	32 – 46 Reg
Centre back Vent	6 – 16 Long	34 – 44 Long

Charcoal J2002C	Black J2002B	Navy J2002N
--------------------	-----------------	----------------



POPLAR

Waistcoat

FEATURES	SIZES
4 button fastening	Regular
Fabric back	(UK) 4 – 24 (EU) 32 - 52

Light Grey V2007LG	Charcoal V2007C	Black V2007B	Navy V2007N
-----------------------	--------------------	-----------------	----------------

SIZE GUIDE

Ladies	
Petite	Women under 5'2" tall
Regular	Women between 5'3" & 5'9" tall
Long	Women over 5'10" tall

GARMENT INFORMATION

64%	Polyester	Weight	315 grams per linear metre
34%	Viscose	Durability	145,000 + Rubs on the Martindale test
2%	Lycra Weft Stretch	Aftercare	Machine Washable at 40°C
Fabric meets Oeko-Tex standard 100			

EVERYONE

LADIES TROUSERS



CHISWICK

Slim Fit Trousers

FEATURES	SIZES
Front fastening	Petite Reg Long
Slim leg	Unfinished
x1 Zip cash pocket	(UK) 4 – 24
Belt loops	(EU) 32 - 52
2 feature hip pockets	

Light Grey	Charcoal	Black	Navy
T2011LG	T2011C	T2011B	T2011N

WHITECHAPEL

Slim Fit Trousers

FEATURES	UK SIZES	EU SIZES
Front fastening	4 – 16 Petite	32 – 44 Petite
Slim leg	4 – 18 Reg	32 – 46 Reg
Key loop	4 – 18 Long	32 – 46 Long
2 feature hip pockets	4 – 18 Un Finished	32 – 46 Un Finished

Charcoal	Black	Navy
T2005C	T2005B	T2005N

MAIDAVALE

Tailored Fit Trousers

FEATURES	SIZES
Front fastening	Petite Reg Long
Curved hip pockets	Unfinished
Key loop	(UK) 4 – 24
Deep waistband	(EU) 32 - 52

Light Grey	Charcoal	Black	Navy
T2004LG	T2004C	T2004B	T2004N

FINSBURY

Classic Fit Trousers

FEATURES	SIZES
Front fastening	Petite Reg Long
Parallel leg	Unfinished
Key loop	(UK) 4 – 24
Deep waistband	(EU) 32 - 52

Light Grey	Charcoal	Black	Navy
T2003LG	T2003C	T2003B	T2003N

GARMENT INFORMATION

64%	Polyester	Weight	315 grams per linear metre
34%	Viscose	Durability	145,000 + Rubs on the Martindale test
2%	Lycra Weft Stretch	Aftercare	Machine Washable at 40°C
Fabric meets Oeko-Tex standard 100			

IN BETWEEN SIZES

Sizes 11 & 13 also available

SIZE GUIDE

Ladies	
Petite	Women under 5'2" tall
Regular	Women between 5'3" & 5'9" tall
Long	Women over 5'10" tall

INSIDE LEG MEASUREMENTS

Short	Regular	Long	Unfinished
29"IL	31"IL	34"IL	37"IL
74CM	79CM	86CM	94CM



Hem widths are based on size 8

EVERYONE

LADIES SKIRTS & DRESSES



BETHNAL

Dress

FEATURES

Knee length
V neck detail
Fully lined
x2 Zip pockets
Rear vent

SIZES

Regular
(UK) 4 - 24
(EU) 32 - 52

Light Grey D2010LG Charcoal D2010C Black D2010B Navy D2010N



PRIMROSE

Dress

FEATURES

Knee length
Shoulder darts
Hip darts
Fully lined
Rear vent

SIZES

Regular
(UK) 4 - 24
(EU) 32 - 52

Light Grey D2008LG Charcoal D2008C Black D2008B Navy D2008N



HOLBORN

Pencil Skirt

FEATURES

Pencil skirt
Front seam detail
Rear centre vent

SIZES

Regular (58cm | 23" length)
Long (64cm | 25" length)
(UK) 4 - 24
(EU) 32 - 52

Light Grey S2006LG Charcoal S2006C Black S2006B Navy S2006N

GARMENT INFORMATION

64% Polyester Weight 315 grams per linear metre
34% Viscose Durability 145,000 + Rubs on the Martindale test
2% Lycra Weft Stretch Aftercare Machine Washable at 40°C

Fabric meets Oeko-Tex standard 100

SIZE GUIDE

Ladies
Petite Women under 5'2" tall
Regular Women between 5'3" & 5'9" tall
Long Women over 5'10" tall

Image Mens -
Titanium Tailored Fit Jacket
Steel Trousers
Charcoal

Image Ladies -
Diamond Tailored Fit Jacket
Quartz Tailored Fit Trousers
Charcoal



ENDURANCE P.V.

collection

The Endurance P.V. Collection "Simply Made To Perform At Work". Extreme performance like Endurance but at a more competitive price. The Endurance P.V. Collection is the best performing collection of business tailored clothing you can buy at this price level.

Mid Weight
360 grams
per linear metre

Available in 3 colours
Charcoal
Black
Navy

67% Polyester
33% Viscose

Weight 360 grams per linear metre
Durability 100,000 + Martindale Test
Pilling Grade 4/5
Aftercare Machine Washable at 40°C

Fabric meets Oeko-Tex standard 100

Image Right -
Steel Classic Fit Jacket
Black

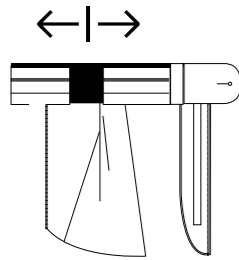
Image Below -
Steel Classic Fit Jacket, Lapel Detail
Black



ENDURANCE P.V.

Image Right -
Titanium Tailored Fit Jacket
Stone Tailored Fit Trousers
Navy

Image Below -
Stone - Easy Waist Tailored Fit Trousers
Charcoal



**EASY WAIST
CONSTRUCTION**

A discreet elastic insert
to give waist ease
while retaining a formal
appearance. The easy waist
has no gap in the pockets
and is unique to Clubclass .



Image Right -
Diamond Tailored Fit Jacket
Quartz Tailored Fit Trousers
Navy

Image Below -
Quartz Trousers Zip Pocket & Key Loop Detail
Charcoal



Did you Know

95% of the polyester used in our collections is made from recycled plastic bottles



ENDURANCE P.V

MENS FULL RANGE



STEEL

Single Breasted Classic Fit Jacket

FEATURES
2 button fastening
Side vents

UK SIZES	EU SIZES
34 – 50 Short	44 – 60 Short
34 – 54 Reg	44 – 64 Reg
36 – 50 Long	46 – 60 Long

Charcoal	Black	Navy
J9501C	J9501B	J9501N



TITANIUM

Tailored Fit Jacket

FEATURES
2 button fastening
Side vent

UK SIZES	EU SIZES
34 – 50 Short	44 – 60 Short
34 – 54 Reg	44 – 64 Reg
36 – 50 Long	46 – 60 Long

Charcoal	Black	Navy
J9502C	J9502B	J9502N



BORON

Waistcoat

FEATURES
5 button fastening
Fabric back

SIZES
Regular
(UK) 34 – 50
(EU) 44 – 60

Charcoal	Black	Navy
V9501B	V9501C	V9501N



STONE

Pleat Front, Classic Fit Trousers

FEATURES	SIZES
French bearer	Short Reg
Belt loops	Long Unfinished
2 Hip pockets	(UK) 28 – 50
1/2 Lined	(EU) 44 – 66

Charcoal	Black	Navy
T9502C	T9502B	T9502N



TUNGSTEN

Flat Front, Tailored Fit Trousers

FEATURES	SIZES
French bearer	Short Reg
Belt loops	Long Unfinished
2 Hip pockets	(UK) 28 – 50
1/2 Lined	(EU) 44 – 66

Charcoal	Black	Navy
T9501C	T9501B	T9501N

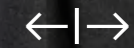


STONE - EASY WAIST

Pleat Front, Classic Fit Trousers

FEATURES	SIZES
French bearer	Short Reg
Belt loops	Long Unfinished
2 Hip pockets	(UK) 28 – 50
1/2 Lined	(EU) 44 – 66

Charcoal	Black	Navy
T9503C	T9503B	T9503N



EASY WAIST WAISTBAND

Ensure comfort throughout the day with the flexible waistband

GARMENT INFORMATION

Weight	360 grams per linear metre
Durability	100,000 + Martindale Test
Pilling	Grade 4/5
Aftercare	Machine Washable at 40°C
67%	Polyester
33%	Viscose

Fabric meets Oeko-Tex standard 100

SIZE GUIDE

Mens	
Short	Men under 5'6" tall
Regular	Men between 5'7" & 6'1" tall
Long	Men over 6'1" tall

INSIDE LEG MEASUREMENTS

Short	Regular	Long	Unfinished
29"IL	31"IL	33"IL	37"IL
74CM	79CM	84CM	94CM

ENDURANCE P.V

LADIES FULL RANGE



DIAMOND

Single Breasted Tailored Fit Jacket

FEATURES	UK SIZES	EU SIZES
2 button fastening	4 – 20 Petite	32 – 48 Petite
	4 – 24 Reg	32 – 52 Reg
	6 – 24 Long	34 – 52 Long

Charcoal J9500C Black J9500B Navy J9500N



PORCELAIN

Waistcoat

FEATURES	SIZES
4 button fastening	Regular
Fabric Back	(UK) 6 – 24
	(EU) 34 – 52

Charcoal V9500C Black V9500B Navy V9500N



QUARTZ

Tailored Fit Trousers

FEATURES	SIZES
Front fastening	Petite Reg
Curved hip pockets	Long Unfinished
Key loop	(UK) 4 – 24
Deep waistband	(EU) 34 – 52

Charcoal T9500C Black T9500B Navy T9500N



COBALT

Pencil Skirt

FEATURES	SIZES
Pencil skirt	Regular (58cm 23" length)
Rear vent	(UK) 4 – 24 (EU) 32 - 52
Bungee cord in left side seam	Long (64cm 25" length)
x2 Zip pockets	(UK) 6 – 24 (EU) 34 - 52

Charcoal S9500C Black S9500B Navy S9500N

GARMENT INFORMATION

67%	Polyester	Weight	360 grams per linear metre
33%	Viscose	Durability	100,000 + Martindale Test
		Pilling	Grade 4/5
		Aftercare	Machine Washable at 40°C
Fabric meets Oeko-Tex standard 100			

SIZE GUIDE

Ladies	
Petite	Women under 5'2" tall
Regular	Women between 5'3" & 5'9" tall
Long	Women over 5'10" tall

INSIDE LEG MEASUREMENTS

Short	Regular	Long	Unfinished
29"IL	31"IL	34"IL	37"IL
74CM	79CM	86CM	94CM



Hem widths are based on size 8



ENDURANCE

collection

Simply made to perform at work. Too many Corporate Clothing providers believe merely adding the word Performance to their label makes for a viable performance tailored clothing solution. At Clubclass when we use the word performance we mean it. The Endurance Collection is the best performing collection of business tailored clothing you can buy.

Mid Weight
360 grams
per linear metre

Available in 3 colours
Charcoal
Black
Navy

Mens -
Mens Docklands Classic Fit Jacket
Stanford Classic Fit Trousers
Black

Ladies -
Ladies Bankside Classic Fit Jacket
Chelsea Tailored Fit Trousers
Black

70% Polyester
30% Wool

Weight 360 grams per linear metre
Durability 99,000 + Martindale Test
Pilling Grade 4/5
Aftercare Machine Washable at 40°C

Fabric meets Oeko-Tex standard 100



Image Above -
Ritz Waistcoat
Principle Classic Fit Trousers
Navy

Image Left -
Docklands Classic Fit Jacket
Black

Image Right -
Astoria Pencil Skirt
Charcoal

Image Right Below -
Camden Slim Fit Trousers
Charcoal



ENDURANCE

MENS FULL RANGE



DOCKLANDS

Single Breasted Classic Fit Jacket

FEATURES	UK SIZES	EU SIZES
2 button fastening	34 – 50 Short	44 – 60 Short
Side vents	34 – 54 Reg	44 – 64 Reg
	36 – 50 Long	46 – 60 Long

Charcoal	Black	Navy
E4J0489	E4J0499	E4J0459



RITZ

Waistcoat

FEATURES	SIZES
5 button fastening	Regular
Fabric back	(UK) 34 – 50
	(EU) 44 – 60

Charcoal	Black	Navy
E5W0489	E5W0499	E5W0459



STANFORD

Plain Front, Classic Fit Trousers

FEATURES	SIZES
French bearer	Short Reg
Belt loops	Long Unfinished
Hip pockets	(UK) 28 – 50
1/2 Lined	(EU) 44 – 66

Charcoal	Black	Navy
E5T0589	E5T0599	E5T0559



PRINCIPLE

Single Pleat, Tailored Fit Trousers

FEATURES	SIZES
French bearer	Short Reg
Belt loops	Long Unfinished
Hip pockets	(UK) 28 – 50
1/2 Lined	(EU) 44 – 66

Charcoal	Black	Navy
E4T0489	E4T0499	E4T0459



LISBON

Poly Viscose, Single Pleat Classic Fit Trousers

FEATURES	SIZES	FEATURES
French bearer	Short Reg	70% Polyester
Belt loops	Long Unfinished	30% Viscose
Hip pockets	(UK) 30 – 50	
1/2 Lined	(EU) 46 – 66	

Black	Navy
H4T0199	H4T0159



PRINCIPLE - STRIPE

Single Pleat Formal Stripe Classic Fit Trousers

FEATURES	SIZES
French bearer	Short Reg
Belt loops	Long Unfinished
Hip pockets	(UK) 28 – 50
1/2 Lined	(EU) 44 – 66

Grey Formal Stripe
E4T0479

GARMENT INFORMATION

Weight	360 grams per linear metre
Durability	99,000 + Martindale Test
Pilling	Grade 4/5
Aftercare	Machine Washable at 40°C
70%	Polyester
30%	Wool

Fabric meets Oeko-Tex standard 100

SIZE GUIDE

Mens	
Short	Men under 5'6" tall
Regular	Men between 5'7" & 6'1" tall
Long	Men over 6'1" tall

INSIDE LEG MEASUREMENTS

Short	Regular	Long	Unfinished
29"IL	31"IL	33"IL	37"IL
74CM	79CM	84CM	94CM

ENDURANCE

LADIES FULL RANGE



BANKSIDE

Single Breasted Classic Fit Jacket

FEATURES	UK SIZES	EU SIZES
3 button fastening	6 - 18 Petite 6 - 24 Reg 6 - 24 Long	34 - 46 Short 34 - 52 Reg 34 - 52 Long

Charcoal	Black	Navy
E5J1589	E5J1599	E5J1559



ADELPHI

Waistcoat

FEATURES	SIZES
4 button fastening Fabric back	Regular (UK) 6 - 24 (EU) 34 - 52

Charcoal	Black	Navy
E5V0489	E5V0499	E5V0459



CAMDEN

Slim Fit Trousers

FEATURES	SIZES
Front fastening 2 Hip pockets	Petite Reg Long Unfinished (UK) 6 - 24 (EU) 34 - 52

Charcoal	Black	Navy
E6LT489	E6LT499	E6LT459



CHELSEA

Tailored Fit Trousers

FEATURES	SIZES
Cash pocket Front fastening Belt loops	Petite Reg Long Unfinished (UK) 6 - 24 (EU) 34 - 52

Charcoal	Black	Navy
E4LT489	E4LT499	E4LT459



BROMPTON

Classic fit trousers

FEATURES	SIZES
Cash pocket 2 Hip pockets Flared leg Low waist	Petite Reg Long Unfinished (UK) 6 - 24 (EU) 34 - 52

Charcoal	Black	Navy
E5LT489	E5LT499	E5LT459



ASTORIA

Pencil skirt

FEATURES	SIZES
Pencil skirt Rear vent Bungee cord in left side seam	Regular (58cm 23" length) Long (64cm 25" length) (UK) 6 - 24 (EU) 34 - 52

Charcoal	Black	Navy
E5S1289	E5S1299	E5S1259

GARMENT INFORMATION

Weight	360 grams per linear metre
Durability	99,000 + Martindale Test
Pilling	Grade 4/5
Aftercare	Machine Washable at 40°C
Composition	70% Polyester 30% Wool

Fabric meets Oeko-Tex standard 100

SIZE GUIDE

Ladies	
Petite	Women under 5'2" tall
Regular	Women between 5'3" & 5'9" tall
Long	Women over 5'10" tall



Hem widths are based on size 8

INSIDE LEG MEASUREMENTS


Short	Regular	Long	Unfinished
29"IL 74CM	31"IL 79CM	34"IL 86CM	37"IL 94CM




THE INTELLIGENT TROUSERS

The intelligent choice for hybrid formal trousers at work

 **Flexible Waistband**
The trousers have a waistband designed to move with the wearer to ensure comfort throughout the working day

 **Enhanced Components**
Extra strong zip, thread and waistband for great day in day out performance.

 **Extremely Durable Fabric**
Tested for demanding environments the fabric is engineered to work just as hard as the wearer day in day out.

 **Sizes & Colours**
Available in a range of sizes for men and women in Navy or Black.

Perfect for men and women who work in demanding environments. From security guards to traffic wardens, warehouse staff and car salesmen. The intelligent trousers are designed to look great, day in day out, wash after wash.

Using a sustainable, durable fabric, along with enhanced zips, buttons and a flexible waistband, Clubclass have developed the Intelligent Trousers to work as hard as the wearer.

GARMENT INFORMATION

48% Cotton	Weight	360 grams per linear metre
38% Polyester	Durability	99,000 + Martindale Test
14% Sorona	Pilling	Grade 4/5
	Aftercare	Machine Washable at 60°C

Fabric meets Oeko-Tex standard 100



INTELLIGENT TROUSERS

FULL RANGE



LADIES

Trouser

FEATURES
Flexible waistband
Durable stretch fabric
Enhanced components

SIZES
Petite | Reg | Long
Unfinished
(UK) 6 – 24
(EU) 34 – 52

Black T2006B Navy T2006N

MENS

Trouser

FEATURES
Flexible waistband
Durable stretch fabric
Enhanced components

SIZES
Short | Reg | Long
Unfinished
(UK) 28 – 50
(EU) 44 – 66

Black T1004B Navy T1004N

SIZE GUIDE

Mens		Ladies	
Short	Men under 5'6" tall	Petite	Women under 5'2" tall
Regular	Men between 5'7" & 6'1" tall	Regular	Women between 5'3" & 5'9" tall
Long	Men over 6'1" tall	Long	Women over 5'10" tall

INSIDE LEG MEASUREMENTS

Mens Short	Mens Reg	Mens Long	Mens Unfinished
29"IL	31"IL	33"IL	37"IL
74CM	79CM	84CM	94CM
Ladies Short	Ladies Reg	Ladies Long	Ladies Unfinished
29"IL	31"IL	34"IL	37"IL
74CM	79CM	86CM	94CM

Image Below -
Ladies Wimbledon Waistcoat
Ladies Ascot Tailored Fit Trousers
Black

Mens Oval Waistcoat
Mens Olympia Tailored Fit Trousers
Black



EVENTS

collection

A collection of black trousers, waistcoats and skirts. Ideal for the demanding environments of hospitality, facilities management and service sectors. It is designed to look good day in, day out, wash after wash. This fabric is currently worn by 1,000's of people everyday; it is truly tried and tested.

Light Weight
280 grams
per linear metre

Available in 1
colour
Black

100% Superfine Natural
Stretch Polyester

Weight 280 grams per linear metre
Durability 140,000 + Rubs on the Martindale test
Pilling Grade 4/5
Aftercare Machine washable at 40°C

Fabric meets Oeko-Tex standard 100

EVENTS

MENS FULL RANGE



OVAL

Waistcoat

FEATURES
5 button fastening
lining back with back
strap and buckle

BLACK
W5007B

XS	S	M	L	XL	XXL	XXXL
34/36	38	40	42	44/46	48/50	52/54



OLYMPIA

Plain Front Tailored Fit Trousers

FEATURES
French bearer
Belt loops
2 Hip pockets
Key loop

SIZES
Short | Reg
Long | Unfinished
(UK) 26 – 50
(EU) 42 – 66

Black
T5002B



PRINCIPLE - STRIPE

Single Pleat Formal Stripe Classic Fit Trousers

FEATURES
French bearer
Belt loops
2 Hip pockets
Key loop
1/2 Lined to the knee

SIZES
Short | Reg
Long | Unfinished
(UK) 28 – 50
(EU) 44 – 66

COMPOSITION
70% Polyester
30% Wool

Grey Formal Stripe
E4T0479

INSIDE LEG MEASUREMENTS

Short	Reg	Long	Unfinished
29"IL 74CM	31"IL 79CM	33"IL 84CM	37"IL 94CM

GARMENT INFORMATION

Weight	280 grams per linear metre
Durability	140,000 + Martindale Test
Pilling	Grade 4/5
Aftercare	Machine Washable 40°C
Fabric	100% Polyester

MENS SIZE GUIDE

Short	Men under 5'6" tall
Regular	Men between 5'7" & 6'1" tall
Long	Men over 6'1" tall

EVENTS

LADIES FULL RANGE



WIMBLEDON

Waistcoat

FEATURES
4 button fastening
lining back with back
strap and buckle

BLACK
V5008B

XS	S	M	L	XL	XXL
4/6	8/10	12	14/16	18/20	22/24



ASCOT

Tailored Fit Trousers

FEATURES
Front fastening
Slim leg
Key loop
2 feature pockets

SIZES
Petite | Reg
Long | Unfinished
(UK) 4 – 24
(EU) 32 – 52

Black
T9006B



GROSVENOR

Skirt

FEATURES
Pencil skirt
Rear centre back vent
Bungee cord

SIZES
Regular (58cm | 23" length)
Long (64cm | 25" length)
(UK) 4 – 24
(EU) 32 – 52

Black
S5004B

INSIDE LEG MEASUREMENTS


Short	Reg	Long	Unfinished
29"IL 74CM	31"IL 79CM	34"IL 86CM	37"IL 94CM

GARMENT INFORMATION

Weight	280 grams per linear metre
Durability	140,000 + Martindale Test
Pilling	Grade 4/5
Aftercare	Machine Washable 40°C
Fabric	100% Polyester

LADIES SIZE GUIDE

Petite	Women under 5'2" tall
Regular	Women between 5'3" & 5'9" tall
Long	Women over 5'10" tall

 Hem widths are based on size 8



“Knowing that the clothing made by Clubclass is tested to destruction and is worn by 100,000s of professionals everyday is reassuring when I choose tailoring for my work place.”

MENS TROUSER SHAPES

Clubclass have designed 3 simple styles that work across our collections. These styles are designed to suit all shapes and sizes.



SLIM FIT

This is an all round slimmer fitting trouser that reflects the current fashion on the high street for slim trousers.



TAILORED FIT

A contemporary fit, that sits nicely between the slim and the classic fit trouser.



CLASSIC FIT

This is a classic everyday trouser with more room than the tailored fit.



LADIES TROUSER SHAPES

Clubclass have designed 3 simple styles that work across our collections. These styles are designed to suit all shapes and sizes.



SLIM FIT

A slimmer fitting trouser for those who want a close fitting trouser.



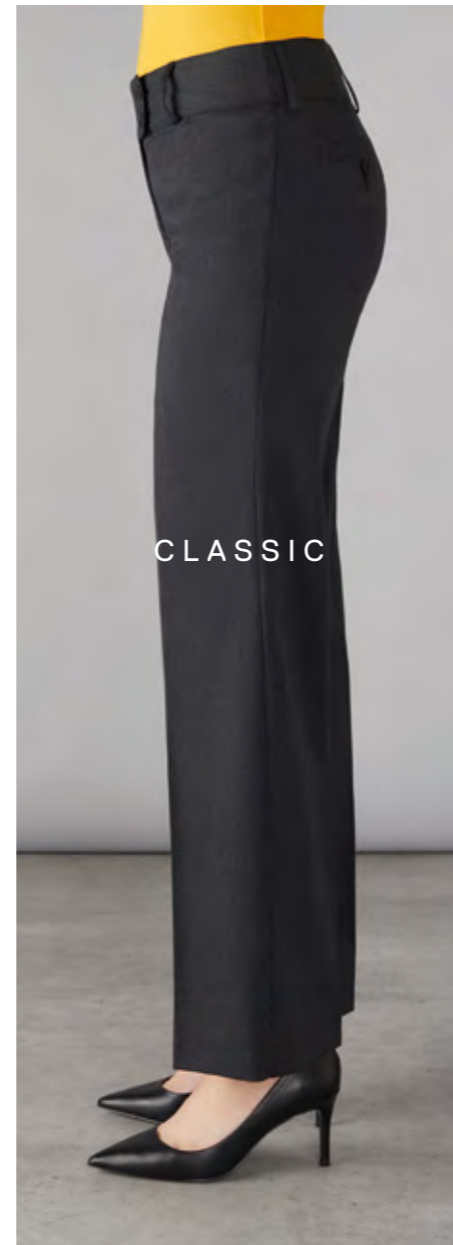
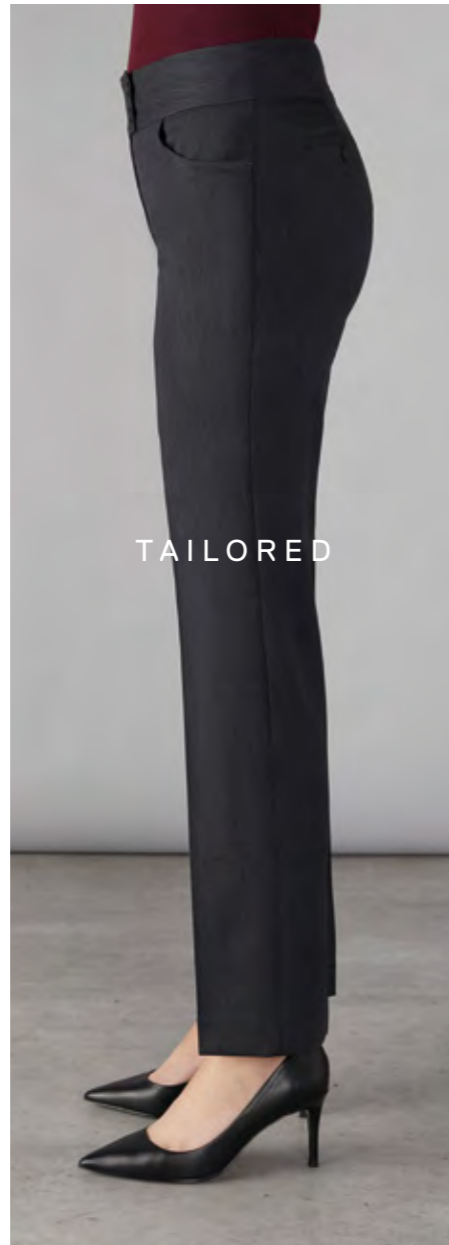
TAILORED FIT

A contemporary fitting trouser that fits nicely between slim fit and the more classic style.



CLASSIC FIT

A more comfortable fit for women who want more room in their trousers.

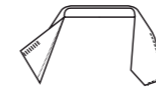


The Architecture of fine tailored clothing for the workplace

Clubclass tailored clothing has much in common with an architectural design process. All garments are a combination of technical know how and fine craftsmanship. Clubclass engineer each piece of clothing from the inside out. Each jacket, trouser and dress has to look fabulous and fit but it's the technical expertise that sets them apart. Canvas, tape and trims are the skeleton of our clothing. Some techniques, exclusively used by Clubclass technicians, give robust performance, reliability, easy wear and a beautiful finish.



SOME OF THE BUILDING BLOCKS THAT GO TO MAKE UP A CLUBCLASS GARMENT



THE COLLAR

If you open up the collar you will notice an extra tape that is used to help stiffen the collar. A unique but important factor.



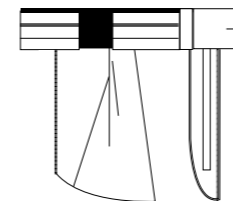
THE LAPEL

The lapels are carefully crafted and rolled to give shape and depth for a clean crisp sharp suit.



THE CANVAS

From the worlds best suppliers create a structured look but it is also durable and flexible allowing the jacket to naturally conform to your body shape.



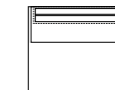
EASY WAIST CONSTRUCTION

A discreet elastic insert to give waist ease while retaining a formal appearance. The easy waist has no gap in the pockets and is unique to Clubclass.



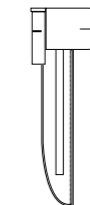
THE BUTTONS

Dyed through buttons that look good for years without fade.



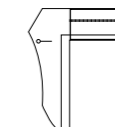
THE POCKETS

Precision made to look good and stay in shape for the life of the garment.



BRANDED ZIPS

Branded zips for industry leading reliability.



FRENCH BEARER

Gives a "clean" look when fastened and stays in shape through long wear.

Wm Sugdens
Thornes Lane Wharf
Wakefield
WF1 5RQ

01924 375 951
sugdens@wsg.co.uk
wmsugden.co.uk